

LEA Name : Wilkes-Barre Area SD  
Address : 730 S Main St  
Wilkes Barre, PA 18711


County : Luzerne  
AUN Number : 118408852  
LEA Type : SD

## Annual Financial Report Accuracy Certification Statement

For Fiscal Year Ending  
6/30/2018

Pennsylvania Department of Education  
&  
Office of Comptroller Operations  
PDE-2056: Intermediate Unit  
PDE-2057: School District, AVTS/CTC, Charter School,  
and Special Program Jointure

**CERTIFICATION:** By signing this page I agree that the electronic data submitted is a complete and accurate statement of the financial operations and status of the local education agency for the fiscal year. It has been prepared in accordance with generally accepted accounting principles and established Commonwealth of PA reporting guidelines.

  
Chief School Administrator Signature

11/29/18  
Date

  
Board Secretary Signature

11/29/18  
Date

MARTIN T FLAHERTY

(570)826-7111 Ext :1146

Contact Person

Contact Person Telephone Number

mflaherty@wbasd.k12.pa.us

(570)819-5011

Contact Person E-mail Address

Contact Person Fax Number

## Audit Certification

### Annual Financial Report:

For Fiscal Year Ending 6/30/2018

(Pursuant to PA School Code Section 218(b))

LEA Name : Wilkes-Barre Area SD

AUN Number : 118408852

County : Luzerne

Audit Certification Due:

12/31/2018

This certification is applicable to the Annual Financial Report data submitted through the Consolidated Financial Reporting System on: NOVEMBER 29, 2018

Date

#### Auditing Firm:

Rainey & Rainey

Auditor Contact Name: Thomas Rainey

Auditor Phone: (570)343-9867

Auditor E-mail:

CERTIFICATION: By signing this page I agree that the financial statements of the school have been properly audited as noted above pursuant to Article XXIV, and in the auditor's professional opinion, the Annual Financial Report (PDE-2057) submitted on the date referenced is materially consistent with the audited financial statements.

Chief School Administrator

Signature

Date

Board Secretary

Signature

Date

MARTIN T FLAHERTY

Contact Person

mflaherty@wbasd.k12.pa.us

Contact Person E-mail Address

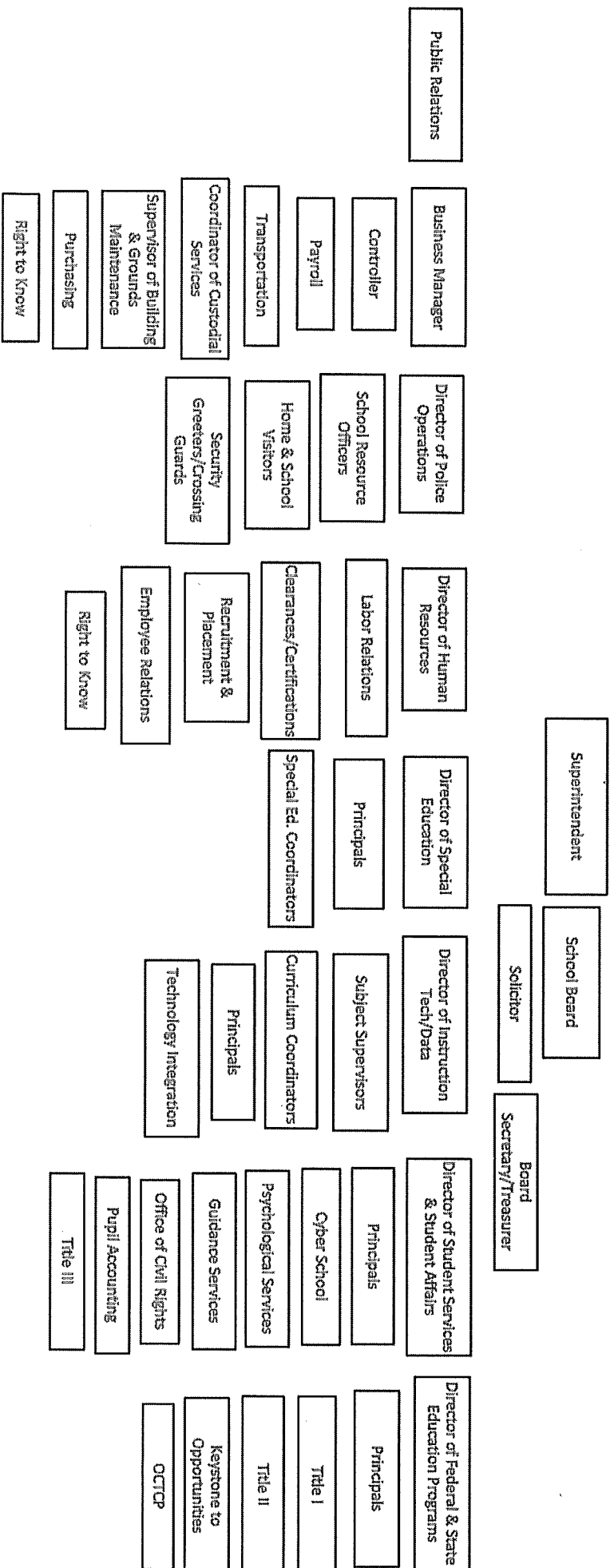
(570)826-7111 Ext : 1146

Contact Person Telephone Number

(570)819-5011

Contact Person Fax Number

## Wilkes-Barre Area School District



<u>Val Number</u>	<u>Description</u>	<u>Justification</u>
13020	REG: Interfund Trans-Out must equal REG Interfund Trans-In plus REP Interfund Trans In minus REP Interfund Trans-Out. (REG 5200 = REG 9300 + REP 9300 - REP 5200) Reference amts do not include any incoming transfers of the Fid. Funds. Include Fid. Fund incoming transfer info in the justification. Correct or enter a justification.  Transfers Out (REG 5200): \$14,303,829.00 (REG 9300) + (REP 9300) - (REP 5200) : \$14,186,123.00	\$117,706 was transferred to fiduciary funds.
30390	Revenue Detail: AFR amount must equal PDE FAI System amount.  7110, AFR Rev Detail: \$27,863,182.15 7110, PDE FAI System: \$27,861,816.59	\$1,365.56 received on 08/30/2018 from PDE for prior years Basic Ed Funding was accrued as of 06/30/18.

LEA : 118408852     Wilkes-Barre Area SD

Printed 3/5/2019 3:19:27 PM

Amounts Expressed in Whole Dollars		<u>General Fund</u> <u>(10)</u>	<u>Public Purpose Trust</u> <u>(27)</u>	<u>Other Compt Approved</u> <u>(28)</u>	<u>Athletic / Activity</u> <u>(29)</u>	<u>Capital Reserve (690.</u> <u>1850)</u> <u>(31)</u>
<b>Assets And Deferred Outflows Of Resources</b>						
<b>Assets</b>						
0100	Cash and Cash Equivalents	23,455,979				
0110	Investments					
0120	Taxes Receivable	5,171,446				
0130	Due From Other Funds					
0141	Due From Other Governments	2,228,810				
0142	State Revenue Receivable	4,733,451				
0143	Federal Revenue Receivable	388,685				
0145	Other Intergovernmental Revenue Receivable					
0146	Due from Primary Government					
0147	Due from Component Unit					
0150	Other Receivables	1,386,459				
0170	Inventories	124,000				
0180	Prepaid Expenses (Expenditures)	26,384				
0190	Other Current Assets					
<b>Total Assets</b>		<b>\$37,515,214</b>				
0910	Deferred Outflows of Resources					
<b>Total Assets And Deferred Outflows Of Resources</b>		<b>\$37,515,214</b>				

LEA : 118408852      Wilkes-Barre Area SD

Printed 3/5/2019 3:19:27 PM

Amounts Expressed in Whole Dollars		<u>Capital Reserve (1431</u> <u>(32)</u>	<u>Other Capital Projects</u> <u>Fund</u> <u>(39)</u>	<u>Debt Service</u> <u>(40)</u>	<u>Permanent</u> <u>(90)</u>	<u>Total Governmental</u> <u>Funds</u>
<b>Assets And Deferred Outflows Of Resources</b>						
<b>Assets</b>						
0100	Cash and Cash Equivalents		18,615,891	9,484		42,081,354
0110	Investments					
0120	Taxes Receivable					5,171,446
0130	Due From Other Funds	1,750,000	3,597			1,753,597
0141	Due From Other Governments					2,228,810
0142	State Revenue Receivable					4,733,451
0143	Federal Revenue Receivable					388,685
0145	Other Intergovernmental Revenue Receivable					
0146	Due from Primary Government					
0147	Due from Component Unit					
0150	Other Receivables					1,386,459
0170	Inventories					124,000
0180	Prepaid Expenses (Expenditures)					26,384
0190	Other Current Assets					
<b>Total Assets</b>		<b>\$1,750,000</b>	<b>\$18,619,488</b>	<b>\$9,484</b>		<b>\$57,894,186</b>
0910	Deferred Outflows of Resources					
<b>Total Assets And Deferred Outflows Of Resources</b>		<b>\$1,750,000</b>	<b>\$18,619,488</b>	<b>\$9,484</b>		<b>\$57,894,186</b>

LEA : 118408852     Wilkes-Barre Area SD

Printed 3/5/2019 3:19:27 PM

Amounts Expressed in Whole Dollars	<u>General Fund</u> <u>(10)</u>	<u>Public Purpose Trust</u> <u>(27)</u>	<u>Other Compt Approved</u> <u>(28)</u>	<u>Athletic / Activity</u> <u>(29)</u>	<u>Capital Reserve (690.</u> <u>1850)</u> <u>(31)</u>
<b>Liabilities And Deferred Inflows Of Resources And Fund Balances</b>					
<b>Liabilities</b>					
0400 Due to Other Funds	3,074,958				
0411 Due to Other Governments	1,000,000				
0412 Due to Primary Government					
0413 Due to Component Unit					
0420 Accounts Payable	2,766,990				
0430 Contracts Payable					
0440 Current Portion of Long-Term Debt					
0450 Short-Term Payables					
0461 Accrued Salaries and Benefits	7,306,769				
0462 Payroll Deductions and Withholding	12,610,052				
0480 Unearned Revenues	5,995,216				
0490 Other Current Liabilities					
<b>Total Liabilities</b>	<b>\$32,753,985</b>				
0950 Deferred Inflows of Resources					
<b>Fund Balances</b>					
0810 Nonspendable Fund Balance	124,000				
0820 Restricted Fund Balance					
0830 Committed Fund Balance					
0840 Assigned Fund Balance					
0850 Unassigned Fund Balance	4,637,229				
<b>Total Fund Balances</b>	<b>\$4,761,229</b>				
<b>Total Liabilities, Deferred Inflows Of Resources And Fund Balances</b>	<b>\$37,515,214</b>				

LEA : 118408852     Wilkes-Barre Area SD

Printed 3/5/2019 3:19:27 PM

Amounts Expressed in Whole Dollars		<u>Capital Reserve (1431)</u> <u>(32)</u>	<u>Other Capital Projects</u> <u>Fund</u> <u>(39)</u>	<u>Debt Service</u> <u>(40)</u>	<u>Permanent</u> <u>(90)</u>	<u>Total Governmental</u> <u>Funds</u>
<b>Liabilities And Deferred Inflows Of Resources And Fund Balances</b>						
<b>Liabilities</b>						
0400	Due to Other Funds					3,074,958
0411	Due to Other Governments					1,000,000
0412	Due to Primary Government					
0413	Due to Component Unit					
0420	Accounts Payable		593,573			3,360,563
0430	Contracts Payable					
0440	Current Portion of Long-Term Debt					
0450	Short-Term Payables					
0461	Accrued Salaries and Benefits					7,306,769
0462	Payroll Deductions and Withholding					12,610,052
0480	Unearned Revenues					5,995,216
0490	Other Current Liabilities					
<b>Total Liabilities</b>			<b>\$593,573</b>			<b>\$33,347,558</b>
0950	Deferred Inflows of Resources					
<b>Fund Balances</b>						
0810	Nonspendable Fund Balance					124,000
0820	Restricted Fund Balance					
0830	Committed Fund Balance					
0840	Assigned Fund Balance	1,750,000	18,025,915	9,484		19,785,399
0850	Unassigned Fund Balance					4,637,229
<b>Total Fund Balances</b>		<b>\$1,750,000</b>	<b>\$18,025,915</b>	<b>\$9,484</b>		<b>\$24,546,628</b>
<b>Total Liabilities, Deferred Inflows Of Resources And Fund Balances</b>		<b>\$1,750,000</b>	<b>\$18,619,488</b>	<b>\$9,484</b>		<b>\$57,894,186</b>



Amounts Expressed in Whole Dollars	<u>General Fund</u> <u>(10)</u>	<u>Public Purpose Trust</u> <u>(27)</u>	<u>Other Compt Approved</u> <u>(28)</u>	<u>Athletic / Activity</u> <u>(29)</u>	<u>Capital Reserve</u> <u>(690.</u> <u>1850)</u> <u>(31)</u>
<b>Revenues</b>					
6000 Revenue from Local Sources	64,386,573				
7000 Revenue from State Sources	49,621,384				
8000 Revenue from Federal Sources	4,745,457				
<b>Total Revenues</b>	<b>\$118,753,414</b>				
<b>Expenditures</b>					
1000 Instruction	81,351,495				
2000 Support Services	28,776,718				
3000 Operation of Non-Instructional Services	2,268,850				
4000 Facilities Acquisition, Construction and Improvement Services					
5110 Debt Service					
5130 Refund of Prior Year Revenues / Receipts	439,809				
<b>Total Expenditures</b>	<b>\$112,836,872</b>				
<b>Excess (Deficiency) Of Revenues Over Expenditures</b>	<b>\$5,916,542</b>				
<b>Other Financing Sources (Uses)</b>					
9110 Face Value of Bonds Issued					
9120 Proceeds from Refunding of Bonds					
9130 Bond Premiums					
9200 Proceeds from Extended-Term Financing					
9300 Interfund Transfers - IN	4,932,119				
9400 Sale of or Compensation for Loss of Fixed Assets					
9710 Transfers from Component Units					
9720 Transfers from Primary Governments					
9910 Other Financing Sources Not Listed in the 9000 Series					
9990 Insurance Recoveries					
5120 Debt Service – Refunded Bonds					
5150 Bond Discounts					
5200 Interfund Transfers – Out	9,054,060				
5300 Transfers Out to Component Units/Primary Governments					
<b>Total Other Financing Sources (Uses)</b>	<b>(\$4,121,941)</b>				

LEA : 118408852     Wilkes-Barre Area SD

Printed 3/5/2019 3:19:29 PM

Amounts Expressed in Whole Dollars		<u>Capital Reserve (1431)</u> <u>(32)</u>	<u>Other Capital Projects</u> <u>Fund</u> <u>(39)</u>	<u>Debt Service</u> <u>(40)</u>	<u>Permanent</u> <u>(90)</u>	<u>Total Governmental</u> <u>Funds</u>
<b>Revenues</b>						
6000	Revenue from Local Sources		66,523	128		64,453,224
7000	Revenue from State Sources					49,621,384
8000	Revenue from Federal Sources					4,745,457
<b>Total Revenues</b>			<b>\$66,523</b>	<b>\$128</b>		<b>\$118,820,065</b>
<b>Expenditures</b>						
1000	Instruction					81,351,495
2000	Support Services			780		28,777,498
3000	Operation of Non-Instructional Services					2,268,850
4000	Facilities Acquisition, Construction and Improvement Services		2,640,275			2,640,275
5110	Debt Service			5,098,705		5,098,705
5130	Refund of Prior Year Revenues / Receipts					439,809
<b>Total Expenditures</b>			<b>\$2,640,275</b>	<b>\$5,099,485</b>		<b>\$120,576,632</b>
<b>Excess (Deficiency) Of Revenues Over Expenditures</b>			<b>(\$2,573,752)</b>	<b>(\$5,099,357)</b>		<b>(\$1,756,567)</b>
<b>Other Financing Sources (Uses)</b>						
9110	Face Value of Bonds Issued					
9120	Proceeds from Refunding of Bonds					
9130	Bond Premiums					
9200	Proceeds from Extended-Term Financing					
9300	Interfund Transfers - IN	1,750,000	5,249,769	2,254,235		14,186,123
9400	Sale of or Compensation for Loss of Fixed Assets					
9710	Transfers from Component Units					
9720	Transfers from Primary Governments					
9910	Other Financing Sources Not Listed in the 9000 Series					
9990	Insurance Recoveries					
5120	Debt Service – Refunded Bonds					
5150	Bond Discounts					
5200	Interfund Transfers – Out		4,932,119	317,650		14,303,829
5300	Transfers Out to Component Units/Primary Governments					
<b>Total Other Financing Sources (Uses)</b>		<b>\$1,750,000</b>	<b>\$317,650</b>	<b>\$1,936,585</b>		<b>(\$117,706)</b>

Amounts Expressed in Whole Dollars		<u>General Fund</u> <u>(10)</u>	<u>Public Purpose Trust</u> <u>(27)</u>	<u>Other Compt Approved</u> <u>(28)</u>	<u>Athletic / Activity</u> <u>(29)</u>	<u>Capital Reserve</u> <u>(690.</u> <u>1850)</u> <u>(31)</u>
<b>Special And Extraordinary Items</b>						
9920	Special Items – Gains					
9930	Extraordinary Items – Gains					
5520	Special Items – Losses					
5530	Extraordinary Items – Losses					
<b>Net Change In Fund Balances</b>		<b>\$1,794,601</b>				
<b>Fund Balance</b>						
0001	Fund Balance - Beginning of Fiscal Year	2,966,628				
<b>Fund Balance - End Of Year</b>		<b>\$4,761,229</b>				

Amounts Expressed in Whole Dollars		<u>Capital Reserve (1431)</u> <u>(32)</u>	<u>Other Capital Projects</u> <u>Fund</u> <u>(39)</u>	<u>Debt Service</u> <u>(40)</u>	<u>Permanent</u> <u>(90)</u>	<u>Total Governmental</u> <u>Funds</u>
<b>Special And Extraordinary Items</b>						
9920 Special Items – Gains						
9930 Extraordinary Items – Gains						
5520 Special Items – Losses						
5530 Extraordinary Items – Losses						
<b>Net Change In Fund Balances</b>		<b>\$1,750,000</b>	<b>(\$2,256,102)</b>	<b>(\$3,162,772)</b>		<b>(\$1,874,273)</b>
<b>Fund Balance</b>						
0001 Fund Balance - Beginning of Fiscal Year			20,282,017	3,172,256		26,420,901
<b>Fund Balance - End Of Year</b>		<b>\$1,750,000</b>	<b>\$18,025,915</b>	<b>\$9,484</b>		<b>\$24,546,628</b>

LEA : 118408852     Wilkes-Barre Area SD

Printed 3/5/2019 3:19:30 PM

Amounts Expressed in Whole Dollars	<u>Food Service</u> <u>(51)</u>	<u>Child Care</u> <u>Operations</u> <u>(52)</u>	<u>Other Enterprise</u> <u>(58)</u>	<u>TOTAL</u>	<u>Internal Service</u> <u>(60)</u>
<b>Assets And Deferred Outflows Of Resources</b>					
<b>Current Assets</b>					
0100 Cash and Cash Equivalents	3,091,318			3,091,318	
0110 Investments					
0130 Due From Other Funds	976,301			976,301	
0141 Due From Other Governments					
0142 State Revenue Receivable					
0143 Federal Revenue Receivable					
0146 Due from Primary Government					
0147 Due from Component Unit					
0150 Other Receivables	75,457			75,457	
0170 Inventories	10,399			10,399	
0180 Prepaid Expenses (Expenditures)					
0190 Other Current Assets					
<b>Total Current Assets</b>	<b>\$4,153,475</b>			<b>\$4,153,475</b>	
<b>Noncurrent Assets</b>					
0211 Land					
0212 Site Improvements (Net)					
0220 Buildings and Building Improvements (Net)					
0230 Machinery, Equipment and Furniture (Net)	336,518			336,518	
0250 Construction in Progress					
0260 Long Term Prepayments					
0290 Other Noncurrent Assets					
<b>Total Noncurrent Assets</b>	<b>\$336,518</b>			<b>\$336,518</b>	
0910 Deferred Outflows of Resources	3,875			3,875	
<b>Total Assets And Deferred Outflows Of Resources</b>	<b>\$4,493,868</b>			<b>\$4,493,868</b>	

LEA : 118408852     Wilkes-Barre Area SD

Printed 3/5/2019 3:19:30 PM

Amounts Expressed in Whole Dollars	Food Service (51)	Child Care Operations (52)	Other Enterprise (58)	TOTAL	Internal Service (60)
<b>Liabilities And Deferred Inflows Of Resources And Net Position</b>					
<b>Current Liabilities</b>					
0400 Due to Other Funds					
0411 Due to Other Governments					
0413 Due to Component Unit					
0420 Accounts Payable	768,242			768,242	
0430 Contracts Payable					
0440 Current Portion of Long-Term Debt					
0450 Short-Term Payables					
0461 Accrued Salaries and Benefits	11,927			11,927	
0462 Payroll Deductions and Withholding					
0480 Unearned Revenues					
0490 Other Current Liabilities					
<b>Total Current Liabilities</b>	<b>\$780,169</b>			<b>\$780,169</b>	
<b>Noncurrent Liabilities</b>					
0510 Bonds Payable					
0520 Extended-Term Financing Agreements Payable					
0530 Lease-Purchase Obligations					
0540 Accumulated Compensated Absences					
0550 Authority Lease Obligations					
0560 Other Post-Employment Benefits (OPEB)	239,526			239,526	
0570 Net Pension Liability					
0599 Other Noncurrent Liabilities					
<b>Total Noncurrent Liabilities</b>	<b>\$239,526</b>			<b>\$239,526</b>	
<b>Total Liabilities</b>	<b>\$1,019,695</b>			<b>\$1,019,695</b>	
0950 Deferred Inflows of Resources	22,777			22,777	
<b>Net Position</b>					
0791 Net Investment in Capital Assets	336,518			336,518	
0008 Restricted Net Position (0792 – 0798)					
0799 Unrestricted Net Position	3,114,878			3,114,878	
<b>Total Net Position</b>	<b>\$3,451,396</b>			<b>\$3,451,396</b>	
<b>Total Liabilities And Deferred Inflows Of Resources And Net Position</b>	<b>\$4,493,868</b>			<b>\$4,493,868</b>	

Amounts Expressed in Whole Dollars	Food Service (51)	Child Care Operations (52)	Other Enterprise (58)	TOTAL	Internal Service (60)
Operating Revenues					
6600 Food Service Revenue	190,805			190,805	
0071 Charges for Services					
0072 Other Operating Revenue					
Total Operating Revenues	\$190,805			\$190,805	
Operating Expenses					
100 Personnel Services – Salaries	191,978			191,978	
200 Personnel Services – Employee Benefits	198,831			198,831	
300 Purchased Professional and Technical Services	3,600			3,600	
400 Purchased Property Services	77,450			77,450	
500 Other Purchased Services	1,330,624			1,330,624	
600 Supplies	2,059,399			2,059,399	
740 Depreciation	64,387			64,387	
810 Dues and Fees					
890 Miscellaneous Expenditures	76,354			76,354	
Total Operating Expenses	\$4,002,623			\$4,002,623	
Operating Income (Loss)	(\$3,811,818)			(\$3,811,818)	
Non Operating Revenues (Expenses)					
6500 Earnings on Investments	13,131			13,131	
6920 Contributions and Donations from Private Sources					
6930 Gains or Losses on Sale of Fixed Assets	900			900	
6991 Refunds of a Prior Year Expenditure					
7000 Revenue from State Sources	198,816			198,816	
8000 Revenue from Federal Sources	4,232,440			4,232,440	
820 Claims and Judgments Against the LEA					
830 Interest					
TOTAL Non Operating Revenues (Expenses)	\$4,445,287			\$4,445,287	
Income (Loss) Before Contributions And Transfers	\$633,469			\$633,469	

Amounts Expressed in Whole Dollars	<u>Food Service</u> <u>(51)</u>	<u>Child Care Operations</u> <u>(52)</u>	<u>Other Enterprise</u> <u>(58)</u>	<u>TOTAL</u>	<u>Internal Service</u> <u>(60)</u>
<b>Contributions, Transfers, and Special and Extraordinary Items</b>					
5200 Interfund Transfers – Out					
5300 Transfers Out to Component Units/Primary Governments					
5520 Special Items – Losses					
5530 Extraordinary Items – Losses					
9300 Interfund Transfers - IN					
9500 Capital Contributions					
9700 Transfers IN From Component Units/Primary Governments					
9920 Special Items – Gains					
9930 Extraordinary Items – Gains					
<b>Change In Net Position</b>	<b>\$633,469</b>			<b>\$633,469</b>	
0002 Net Position - Beginning of Fiscal Year	3,031,228			3,031,228	
0003 Accounting Changes / Residual Equity Transfers	(213,301)			(213,301)	
<b>Net Position - End Of Year</b>	<b>\$3,451,396</b>			<b>\$3,451,396</b>	



LEA : 118408852      Wilkes-Barre Area SD

Printed 3/5/2019 3:19:34 PM

Amounts Expressed in Whole Dollars	<u>Food Service</u> <u>(51)</u>	<u>Child Care Operations</u> <u>(52)</u>	<u>Other Enterprise</u> <u>(58)</u>	<u>TOTAL</u>	<u>Internal Service(60)</u>
<b>Cash Flows From Operating Activities</b>					
0011 Cash Receipts From Users	179,848			179,848	
0012 Cash Receipts From Assessments Made to Other Funds					
0013 Cash Receipts From Earnings on Investments					
0014 Cash Receipts From Other Operating Revenue	18,615			18,615	
0015 Cash Payments To Employees For Services	363,998			363,998	
0016 Cash Payments For Insurance Claims					
0017 Cash Payments To Suppliers For Goods and Services	2,768,126			2,768,126	
0018 Cash Payments For Other Operating Expenses					
<b>Net Cash Provided By (Used For) Operating Activities</b>	<b>(\$2,933,661)</b>			<b>(\$2,933,661)</b>	
<b>Cash Flows From Non-Capital Financing Activities</b>					
0021 Receipts From Local Sources - 6000					
0022 Receipts From State Sources - 7000	179,997			179,997	
0023 Receipts From Federal Sources -8000	3,508,470			3,508,470	
0024 Notes and Loans Received (Repaid)					
0025 Interest Paid on Notes/Loans - 5100-830					
0026 Operating Transfers In (Out)/Residual Equity Trans					
0027 Operating Transfers In (Out) Primary Government / Comp Unit					
0028 Receipts From Refund of Prior Year Expenditures - 6991					
0029 Special and Extraordinary Gains (losses)					
0030 Receipts from Insurance Recoveries -9990					
<b>Net Cash Prov By (Used for) Non-Capital Financing Activities</b>	<b>\$3,688,467</b>			<b>\$3,688,467</b>	
<b>Cash Flows From Capital and Related Financing Activities</b>					
0031 Payments For Fac Acq, Const, and Imp - 4000	(131,362)			(131,362)	
0032 Gain / (Loss) on Sale of Fixed Assets - 6930	900			900	
0033 Proceeds From Extended Term Financing - 9200					
0034 Principal Paid on Financing Agreements					
0035 Interest Paid on Financing Agreements - 5100-830					
0036 (Inc) Dec in Contributed Capital					
<b>Net Cash Prov By (Used for) Capital and Related Financing Activities</b>	<b>(\$130,462)</b>			<b>(\$130,462)</b>	
<b>Cash Flows From Investing Activities</b>					
0041 Earnings on Investments - 6500	13,130			13,130	
0042 Purchase of Inv Securities / Deposits to Inv Pools					
0043 Receipts From Investment Pool Withdrawals					
0044 Proceeds from Sale and Maturity of Inv Securities					

LEA : 118408852     Wilkes-Barre Area SD

Printed 3/5/2019 3:19:34 PM

0045   Loans Received (Paid)

Net Cash Prov By (Used for) Investing Activities	\$13,130	\$13,130
--	----------	----------

LEA : 118408852     Wilkes-Barre Area SD

Printed 3/5/2019 3:19:34 PM

	Food Service (51)	Child Care Operations (52)	Other Enterprise (58)	TOTAL	Internal Service (60)
Net Increase (Decrease) in Cash Flows	637,474			637,474	
0004 Cash and Cash Equivalents Beginning of Year	2,453,844			2,453,844	
Cash and Cash Equivalents at Year End	\$3,091,318			\$3,091,318	
Reconciliation of Operating Income (Loss) To Net Cash Provided by (Used For) Operating Activities					
0005 Operating Income (Loss) per REP	(3,811,818)			(3,811,818)	
Adjustments					
0051 Depreciation and Net Amortization	64,387			64,387	
0052 Provision for Uncollectible Accounts					
0053 Other Adjustments	253,488			253,488	
Effect of Changes in Assets, Liabilities, Deferred Outflows and Deferred Inflows					
0054 (Inc) Dec In Accounts Receivable (0120-0150)	7,658			7,658	
0055 Advances to Other Funds (0160)					
0056 (Inc) Dec in Inventories (0170)	9,307			9,307	
0057 (Inc) Dec in Prepaid Expenses (0180)					
0058 (Inc) Dec in Other Current or Noncurrent Assets					
0064 Deferred Outflows (0910)					
0059 Inc (Dec) in Accounts Payable (0400-0450)	516,507			516,507	
0060 Inc (Dec) in Accrued Salaries/Benefits (0461)	26,810			26,810	
0065 Inc (Dec) in Net Pension Liabilities (0570)					
0066 Inc (Dec) in Other Postemp Benefit Oblig (0560)					
0061 Inc (Dec) in Payroll Deductions/Withholding (0462)					
0062 Inc (Dec) in Unearned Revenue (0480)					
0063 Inc (Dec) in Other Current or Noncurrent Liabilities					
0067 Deferred Inflows (0950)					
Total Adjustments	\$878,157			\$878,157	
Cash Provided By (Used for) Total	(\$2,933,661)			(\$2,933,661)	

COMBINED STATEMENT OF CASH FLOWS  
SCHEDULE OF NONCASH INVESTING, CAPITAL, AND FINANCING ACTIVITIES

Explanation of Transaction and Balance Sheet Effect	Amount
Total	

LEA : 118408852     Wilkes-Barre Area SD

Printed 3/5/2019 3:19:35 PM

Amounts Expressed in Whole Dollars	<u>Private Purpose Trust</u> <u>(71)</u>	<u>Investment Trust</u> <u>(72)</u>	<u>Pension Trust</u> <u>(73)</u>	<u>Activity</u> <u>(81)</u>
<b>Assets And Deferred Outflows Of Resources</b>				
<b>Assets</b>				
0100 Cash and Cash Equivalents	500,940			446,098
0110 Investments				
0130 Due From Other Funds	345,060			
0147 Due from Component Unit				
0150 Other Receivables				
0170 Inventories				
0180 Prepaid Expenses (Expenditures)				
0190 Other Current Assets				
0220 Buildings and Building Improvements (Net)				
0230 Machinery, Equipment and Furniture (Net)				
<b>Total Assets</b>	<b>\$846,000</b>			<b>\$446,098</b>
0910 Deferred Outflows of Resources				
<b>Total Assets And Deferred Outflows Of Resources</b>	<b>\$846,000</b>			<b>\$446,098</b>

LEA : 118408852     Wilkes-Barre Area SD

Printed 3/5/2019 3:19:35 PM

Amounts Expressed in Whole Dollars		<u>Other Agency</u> <u>(89)</u>	<u>Discrete Component Units</u> <u>(98)</u>	<u>Discrete Component Units</u> <u>(99)</u>	<u>Total Fiduciary Funds</u>
<b>Assets And Deferred Outflows Of Resources</b>					
<b>Assets</b>					
0100	Cash and Cash Equivalents				947,038
0110	Investments				
0130	Due From Other Funds				345,060
0147	Due from Component Unit				
0150	Other Receivables				
0170	Inventories				
0180	Prepaid Expenses (Expenditures)				
0190	Other Current Assets				
0220	Buildings and Building Improvements (Net)				
0230	Machinery, Equipment and Furniture (Net)				
<b>Total Assets</b>					<b>\$1,292,098</b>
0910	Deferred Outflows of Resources				
<b>Total Assets And Deferred Outflows Of Resources</b>					<b>\$1,292,098</b>

LEA : 118408852     Wilkes-Barre Area SD

Printed 3/5/2019 3:19:35 PM

Amounts Expressed in Whole Dollars	<u>Private Purpose Trust</u> <u>(71)</u>	<u>Investment Trust</u> <u>(72)</u>	<u>Pension Trust</u> <u>(73)</u>	<u>Activity</u> <u>(81)</u>
<b>Liabilities, Deferred Inflows Of Resources And Net Position</b>				
<b>Liabilities</b>				
0400 Due to Other Funds				
0411 Due to Other Governments				
0412 Due to Primary Government				
0413 Due to Component Unit				
0420 Accounts Payable				
0430 Contracts Payable				
0450 Short-Term Payables				
0461 Accrued Salaries and Benefits				
0462 Payroll Deductions and Withholding				
0480 Unearned Revenues				
0490 Other Current Liabilities				446,098
<b>Total Liabilities</b>				<b>\$446,098</b>
0950 Deferred Inflows of Resources				
<b>Net Position</b>				
0791 Net Investment in Capital Assets				
0009 Restricted Net Position (0792 – 0798)	846,000			
0799 Unrestricted Net Position				
<b>Total Net Position</b>	<b>\$846,000</b>			
<b>Total Liabilities, Deferred Inflows Of Resources And Net Position</b>	<b>\$846,000</b>			<b>\$446,098</b>

LEA : 118408852     Wilkes-Barre Area SD

Printed 3/5/2019 3:19:35 PM

Amounts Expressed in Whole Dollars		<u>Other Agency</u>	<u>Discrete Component Units</u>	<u>Discrete Component Units</u>	<u>Total Fiduciary Funds</u>
		(89)	(98)	(99)	
<b>Liabilities, Deferred Inflows Of Resources And Net Position</b>					
<b>Liabilities</b>					
0400	Due to Other Funds				
0411	Due to Other Governments				
0412	Due to Primary Government				
0413	Due to Component Unit				
0420	Accounts Payable				
0430	Contracts Payable				
0450	Short-Term Payables				
0461	Accrued Salaries and Benefits				
0462	Payroll Deductions and Withholding				
0480	Unearned Revenues				
0490	Other Current Liabilities				446,098
<b>Total Liabilities</b>					<b>\$446,098</b>
0950	Deferred Inflows of Resources				
<b>Net Position</b>					
0791	Net Investment in Capital Assets				
0009	Restricted Net Position (0792 – 0798)				846,000
0799	Unrestricted Net Position				
<b>Total Net Position</b>					<b>\$846,000</b>
<b>Total Liabilities, Deferred Inflows Of Resources And Net Position</b>					<b>\$1,292,098</b>



LEA : 118408852     Wilkes-Barre Area SD

Printed 3/5/2019 3:19:36 PM

Amounts Expressed in Whole Dollars	<u>Private Purpose Trust</u> <u>(71)</u>	<u>Investment Trust</u> <u>(72)</u>	<u>Pension Trust</u> <u>(73)</u>	<u>Discrete Component</u> <u>Units</u> <u>(98)</u>	<u>Discrete Component</u> <u>Units</u> <u>(99)</u>	<u>Total Fiduciary</u> <u>Funds</u>
<b>Additions</b>						
0091 Gifts and Contributions						
0092 Other Additions	95,000					95,000
<b>Deductions</b>						
0093 Scholarships Awarded						
0094 Other Deductions	14,000					14,000
<b>Change In Net Position</b>	<b>\$81,000</b>					<b>\$81,000</b>
0006 Net Position – Beginning of Fiscal Year	765,000					765,000
0007 Net Position Held in Trust for Pension Benefits						
<b>Net Position - End of Fiscal Year</b>	<b>\$846,000</b>					<b>\$846,000</b>

LEA : 118408852     Wilkes-Barre Area SD

General Fund (10)

Printed 3/5/2019 3:19:37 PM

Page - 1 of 4

	Revenue Reported In Current Year	Current Year Tax Accrual	Prior Year Tax Accrual	Taxes Collected In Current Year
<b>Revenue from Local Sources</b>				
6111 Current Real Estate Taxes	48,910,068.23			48,910,068.23
6113 Public Utility Realty Taxes	57,487.11			57,487.11
6114 Payments in Lieu of Current Taxes - State / Local	118,395.19			118,395.19
6141 Current Act 511 Per Capita Taxes	93,000.04			93,000.04
6143 Current Act 511 Local Services Taxes	204,405.70			204,405.70
6151 Current Act 511 Earned Income Taxes	5,100,738.37			5,100,738.37
6153 Current Act 511 Real Estate Transfer Taxes	751,467.73			751,467.73
6155 Current Act 511 Business Privilege Taxes	1,162,167.99			1,162,167.99
6157 Current Act 511 Mercantile Taxes	1,394,491.89			1,394,491.89
6411 Delinquent Real Estate Taxes	4,929,748.22			4,929,748.22
6500 Earnings on Investments	138,523.81			
6700 Revenues from LEA Activities	46,000.00			
6832 Federal IDEA Revenue Received as Pass Through	889,087.00			
6910 Rentals	67,875.17			
6920 Contributions and Donations from Private Sources	1,000.00			
6941 Regular Day School Tuition	135,301.40			
6944 Receipts from Other LEAs in Pennsylvania - Education	168,661.64			
6999 Other Revenues Not Specified Above	218,153.90			
<b>TOTAL Revenue from Local Sources</b>	<b>\$64,386,573.39</b>			<b>\$62,721,970.47</b>

	Revenue Reported In Current Year			
<b>Revenue from State Sources</b>				
7110 Basic Education Funding	27,863,182.15			
7160 Tuition for Orphans Subsidy	42,296.83			
7271 Special Education funds for School-Aged Pupils	4,545,031.07			
7299 Program Revenues Not Listed Previously in the 7200 Series	21,093.17			
7311 Pupil Transportation Subsidy	1,020,311.95			
7312 Nonpublic and Charter School Pupil Transportation Subsidy	255,640.00			
7320 Rental and Sinking Fund Payments / Building Reimbursement Subsidy	30,036.26			
7330 Health Services (Medical, Dental, Nurse, Act 25)	149,459.70			
7340 State Property Tax Reduction Allocation	2,886,257.68			
7360 Safe Schools	4,351.00			
7505 Ready to Learn Block Grant	1,157,796.00			
7810 State Share of Social Security and Medicare Taxes	2,128,851.61			
7820 State Share of Retirement Contributions	9,492,004.02			
7990 Other Technology Grants	25,072.37			
<b>TOTAL Revenue from State Sources</b>	<b>\$49,621,383.81</b>			

	Revenue Reported In Current Year			
<b><u>Revenue from Federal Sources</u></b>				
8514 NCLB, Title I - Improving the Academic Achievement of the Disadvantaged	4,003,157.51			
8515 NCLB, Title II - Preparing, Training and Recruiting High Quality Teachers and Principals	419,263.30			
8516 NCLB, Title III - Language Instruction for Limited English Proficient and Immigrant Students	102,828.77			
8517 NCLB, Title IV - 21St Century Schools	41,851.57			
8810 School-Based Access Medicaid Reimbursement Program (SBAP) Reimbursements (Access)	19,978.50			
8820 Medical Assistance Reimbursement for Administrative Claiming (Quarterly) Program	158,377.57			
<b>TOTAL Revenue from Federal Sources</b>	<b>\$4,745,457.22</b>			

	Revenue Reported In Current Year			
<b><u>Other Financing Sources</u></b>				
9330 Capital Projects Fund Transfers	4,932,119.45			
<b>TOTAL Other Financing Sources</b>	<b>\$4,932,119.45</b>			
<b>TOTAL FROM ALL SOURCES</b>	<b>\$123,685,533.87</b>			<b>\$62,721,970.47</b>

Revenue from Local Sources	64,386,573.39
Revenue from State Sources	49,621,383.81
Revenue from Federal Sources	4,745,457.22
Other Financing Sources	4,932,119.45
<b>TOTAL FROM ALL SOURCES</b>	<b>\$123,685,533.87</b>

LEA : 118408852     Wilkes-Barre Area SD

Printed 3/5/2019 3:19:42 PM

<b>General Fund (10)</b>	
<b>1000 Instruction</b>	<b><u>Total</u></b>
<b>100 <u>Personnel Services – Salaries</u></b>	
100 Personnel Services – Salaries	35,422,413.60
<b>Total Personnel Services – Salaries</b>	<b>\$35,422,413.60</b>
<b>200 <u>Personnel Services – Employee Benefits</u></b>	
210 Group Insurance – Contracted Provider	10,686,933.68
220 Social Security Contributions	2,721,921.07
230 PSERS Retirement Contributions	11,338,608.51
250 Unemployment Compensation	84,957.64
260 Workers' Compensation	286,204.35
<b>Total Personnel Services – Employee Benefits</b>	<b>\$25,118,625.25</b>
<b>300 <u>Purchased Professional and Technical Services</u></b>	
322 Professional Educational Services – Ius	2,365,462.71
323 Professional Educational Services – Other Educational Agencies	3,325.00
329 Professional Educational Services – Other	655,915.89
330 Other Professional Services	110,203.29
390 Other Purchased Professional and Technical Services	200,034.21
<b>Total Purchased Professional and Technical Services</b>	<b>\$3,334,941.10</b>
<b>400 <u>Purchased Property Services</u></b>	
430 Repairs and Maintenance Services	11,119.26
440 Rentals	712,005.98
<b>Total Purchased Property Services</b>	<b>\$723,125.24</b>
<b>500 <u>Other Purchased Services</u></b>	
530 Communications	33,633.00
561 Tuition To Other School Districts Within the State	1,086,059.38
562 Tuition To Pennsylvania Charter Schools	8,792,139.59
564 Tuition To Career and Technology Centers	2,869,323.95
567 Tuition To Approved Private Schools (APS) and PA Chartered Schools for the Deaf and Blind	91,681.10
568 Tuition To Private Residential Rehabilitative Institutions (PRRI) [In-State] and Detention Centers	1,713,008.52
580 Travel	13,605.68
594 IU Payment By Withholding for Institutionalized Children's Programs – Special Classes	1,079,804.80
<b>Total Other Purchased Services</b>	<b>\$15,679,256.02</b>
<b>600 <u>Supplies</u></b>	
610 General Supplies	961,754.70
640 Books and Periodicals	111,379.21
<b>Total Supplies</b>	<b>\$1,073,133.91</b>
<b>Total 1000 Instruction</b>	<b>\$81,351,495.12</b>

LEA : 118408852      Wilkes-Barre Area SD

Printed 3/5/2019 3:19:42 PM

General Fund (10)

1100 Regular Programs – Elementary / Secondary	Elementary	Secondary	Federal	Total
<b>100 Personnel Services – Salaries</b>				
100 Personnel Services – Salaries	12,236,504.92	12,729,692.12	2,387,453.25	27,353,650.29
<b>Total Personnel Services – Salaries</b>	<b>\$12,236,504.92</b>	<b>\$12,729,692.12</b>	<b>\$2,387,453.25</b>	<b>\$27,353,650.29</b>
<b>200 Personnel Services – Employee Benefits</b>				
210 Group Insurance – Contracted Provider	3,897,487.48	3,649,450.66	567,937.63	8,114,875.77
220 Social Security Contributions	1,015,753.21	999,355.58	83,830.22	2,098,939.01
230 PSERS Retirement Contributions	4,342,707.54	4,056,380.21	373,617.73	8,772,705.48
250 Unemployment Compensation	42,478.81	42,478.83		84,957.64
260 Workers' Compensation	102,501.51	103,603.28	15,026.47	221,131.26
<b>Total Personnel Services – Employee Benefits</b>	<b>\$9,400,928.55</b>	<b>\$8,851,268.56</b>	<b>\$1,040,412.05</b>	<b>\$19,292,609.16</b>
<b>300 Purchased Professional and Technical Services</b>				
323 Professional Educational Services – Other Educational Agencies	1,662.50	1,662.50		3,325.00
329 Professional Educational Services – Other	360,818.24	295,097.65		655,915.89
<b>Total Purchased Professional and Technical Services</b>	<b>\$362,480.74</b>	<b>\$296,760.15</b>		<b>\$659,240.89</b>
<b>400 Purchased Property Services</b>				
430 Repairs and Maintenance Services	5,218.85	5,900.41		11,119.26
440 Rentals	340,338.99	371,666.99		712,005.98
<b>Total Purchased Property Services</b>	<b>\$345,557.84</b>	<b>\$377,567.40</b>		<b>\$723,125.24</b>
<b>500 Other Purchased Services</b>				
530 Communications	16,816.50	16,816.50		33,633.00
562 Tuition To Pennsylvania Charter Schools	4,637,756.20	1,530,265.42		6,168,021.62
568 Tuition To Private Residential Rehabilitative Institutions (PRRI) [In-State] and Detention Centers	52,249.94	52,249.94		104,499.88
580 Travel	6,006.77	5,429.26		11,436.03
<b>Total Other Purchased Services</b>	<b>\$4,712,829.41</b>	<b>\$1,604,761.12</b>		<b>\$6,317,590.53</b>
<b>600 Supplies</b>				
610 General Supplies	164,295.04	103,831.17	649,606.98	917,733.19
640 Books and Periodicals	49,593.30	31,845.16	11,575.99	93,014.45
<b>Total Supplies</b>	<b>\$213,888.34</b>	<b>\$135,676.33</b>	<b>\$661,182.97</b>	<b>\$1,010,747.64</b>
<b>Total 1100 Regular Programs – Elementary / Secondary</b>	<b>\$27,272,189.80</b>	<b>\$23,995,725.68</b>	<b>\$4,089,048.27</b>	<b>\$55,356,963.75</b>



LEA : 118408852     Wilkes-Barre Area SD

Printed 3/5/2019 3:19:42 PM

General Fund (10)

1110 Regular Programs

	Elementary	Secondary	Federal	Total
<b>100 Personnel Services – Salaries</b>				
100 Personnel Services – Salaries	12,236,504.92	12,729,692.12	368,950.61	25,335,147.65
<b>Total Personnel Services – Salaries</b>	<b>\$12,236,504.92</b>	<b>\$12,729,692.12</b>	<b>\$368,950.61</b>	<b>\$25,335,147.65</b>
<b>200 Personnel Services – Employee Benefits</b>				
210 Group Insurance – Contracted Provider	3,897,487.48	3,649,450.66	74,054.67	7,620,992.81
220 Social Security Contributions	1,015,753.21	999,355.58	6,622.50	2,021,731.29
230 PSERS Retirement Contributions	4,342,707.54	4,056,380.21	44,904.57	8,443,992.32
250 Unemployment Compensation	42,478.81	42,478.83		84,957.64
260 Workers' Compensation	102,501.51	103,603.28	1,763.05	207,867.84
<b>Total Personnel Services – Employee Benefits</b>	<b>\$9,400,928.55</b>	<b>\$8,851,268.56</b>	<b>\$127,344.79</b>	<b>\$18,379,541.90</b>
<b>300 Purchased Professional and Technical Services</b>				
323 Professional Educational Services – Other Educational Agencies	1,662.50	1,662.50		3,325.00
329 Professional Educational Services – Other	360,818.24	295,097.65		655,915.89
<b>Total Purchased Professional and Technical Services</b>	<b>\$362,480.74</b>	<b>\$296,760.15</b>		<b>\$659,240.89</b>
<b>400 Purchased Property Services</b>				
430 Repairs and Maintenance Services	5,218.85	5,900.41		11,119.26
440 Rentals	340,338.99	371,666.99		712,005.98
<b>Total Purchased Property Services</b>	<b>\$345,557.84</b>	<b>\$377,567.40</b>		<b>\$723,125.24</b>
<b>500 Other Purchased Services</b>				
530 Communications	16,816.50	16,816.50		33,633.00
562 Tuition To Pennsylvania Charter Schools	4,637,756.20	1,530,265.42		6,168,021.62
568 Tuition To Private Residential Rehabilitative Institutions (PRRI) [In-State] and Detention Centers	52,249.94	52,249.94		104,499.88
580 Travel	6,006.77	5,429.26		11,436.03
<b>Total Other Purchased Services</b>	<b>\$4,712,829.41</b>	<b>\$1,604,761.12</b>		<b>\$6,317,590.53</b>
<b>600 Supplies</b>				
610 General Supplies	164,295.04	103,831.17	494,216.02	762,342.23
640 Books and Periodicals	49,593.30	31,845.16	11,575.99	93,014.45
<b>Total Supplies</b>	<b>\$213,888.34</b>	<b>\$135,676.33</b>	<b>\$505,792.01</b>	<b>\$855,356.68</b>
<b>Total 1110 Regular Programs</b>	<b>\$27,272,189.80</b>	<b>\$23,995,725.68</b>	<b>\$1,002,087.41</b>	<b>\$52,270,002.89</b>

LEA : 118408852     Wilkes-Barre Area SD

Printed 3/5/2019 3:19:42 PM

General Fund (10)

1190 Federally-Funded Regular Programs

	<u>Elementary</u>	<u>Secondary</u>	<u>Federal</u>	<u>Total</u>
<b>100 <u>Personnel Services – Salaries</u></b>				
100 Personnel Services – Salaries			2,018,502.64	2,018,502.64
<b>Total Personnel Services – Salaries</b>			<b>\$2,018,502.64</b>	<b>\$2,018,502.64</b>
<b>200 <u>Personnel Services – Employee Benefits</u></b>				
210 Group Insurance – Contracted Provider			493,882.96	493,882.96
220 Social Security Contributions			77,207.72	77,207.72
230 PSERS Retirement Contributions			328,713.16	328,713.16
260 Workers' Compensation			13,263.42	13,263.42
<b>Total Personnel Services – Employee Benefits</b>			<b>\$913,067.26</b>	<b>\$913,067.26</b>
<b>600 <u>Supplies</u></b>				
610 General Supplies			155,390.96	155,390.96
<b>Total Supplies</b>			<b>\$155,390.96</b>	<b>\$155,390.96</b>
<b>Total 1190 Federally-Funded Regular Programs</b>			<b>\$3,086,960.86</b>	<b>\$3,086,960.86</b>

LEA : 118408852     Wilkes-Barre Area SD

Printed 3/5/2019 3:19:42 PM

General Fund (10)				
1200 Special Programs – Elementary / Secondary	<u>Elementary</u>	<u>Secondary</u>	<u>Federal</u>	<u>Total</u>
100 <u>Personnel Services – Salaries</u>				
100 Personnel Services – Salaries	3,869,304.70	2,612,874.30	761,921.70	7,244,100.70
<b>Total Personnel Services – Salaries</b>	<b>\$3,869,304.70</b>	<b>\$2,612,874.30</b>	<b>\$761,921.70</b>	<b>\$7,244,100.70</b>
200 <u>Personnel Services – Employee Benefits</u>				
210 Group Insurance – Contracted Provider	1,468,903.27	969,093.07	13,960.14	2,451,956.48
220 Social Security Contributions	320,060.19	232,274.63	2,803.54	555,138.36
230 PSERS Retirement Contributions	1,363,935.41	932,779.65	11,936.14	2,308,651.20
260 Workers' Compensation	33,814.44	24,098.54	612.81	58,525.79
<b>Total Personnel Services – Employee Benefits</b>	<b>\$3,186,713.31</b>	<b>\$2,158,245.89</b>	<b>\$29,312.63</b>	<b>\$5,374,271.83</b>
300 <u>Purchased Professional and Technical Services</u>				
322 Professional Educational Services – Ius	914,956.81	783,067.00	62,439.74	1,760,463.55
330 Other Professional Services	55,101.65	55,101.64		110,203.29
390 Other Purchased Professional and Technical Services	181,534.21			181,534.21
<b>Total Purchased Professional and Technical Services</b>	<b>\$1,151,592.67</b>	<b>\$838,168.64</b>	<b>\$62,439.74</b>	<b>\$2,052,201.05</b>
500 <u>Other Purchased Services</u>				
561 Tuition To Other School Districts Within the State	157,789.84	224,407.13		382,196.97
562 Tuition To Pennsylvania Charter Schools	1,312,058.98	1,312,058.99		2,624,117.97
567 Tuition To Approved Private Schools (APS) and PA Chartered Schools for the Deaf and Blind	45,840.55	45,840.55		91,681.10
568 Tuition To Private Residential Rehabilitative Institutions (PRRI) [In-State] and Detention Centers	783,038.32	825,470.32		1,608,508.64
580 Travel	2,083.16	86.49		2,169.65
594 IU Payment By Withholding for Institutionalized Children's Programs – Special Classes	7,163.89	1,072,640.91		1,079,804.80
<b>Total Other Purchased Services</b>	<b>\$2,307,974.74</b>	<b>\$3,480,504.39</b>		<b>\$5,788,479.13</b>
600 <u>Supplies</u>				
610 General Supplies	33,929.53	7,750.39		41,679.92
640 Books and Periodicals	9,480.01	8,884.75		18,364.76
<b>Total Supplies</b>	<b>\$43,409.54</b>	<b>\$16,635.14</b>		<b>\$60,044.68</b>
<b>Total 1200 Special Programs – Elementary / Secondary</b>	<b>\$10,558,994.96</b>	<b>\$9,106,428.36</b>	<b>\$853,674.07</b>	<b>\$20,519,097.39</b>

LEA : 118408852     Wilkes-Barre Area SD

Printed 3/5/2019 3:19:42 PM

<b>General Fund (10)</b>				
<b>1210 Life Skills Support</b>	<u>Elementary</u>	<u>Secondary</u>	<u>Federal</u>	<u>Total</u>
<b>100 <u>Personnel Services – Salaries</u></b>				
100 Personnel Services – Salaries	573,197.15	300,623.36		873,820.51
<b>Total Personnel Services – Salaries</b>	<b>\$573,197.15</b>	<b>\$300,623.36</b>		<b>\$873,820.51</b>
<b>200 <u>Personnel Services – Employee Benefits</u></b>				
210 Group Insurance – Contracted Provider	247,896.07	120,539.75		368,435.82
220 Social Security Contributions	43,781.01	22,997.77		66,778.78
230 PSERS Retirement Contributions	186,774.57	98,191.80		284,966.37
260 Workers' Compensation	4,649.25	2,442.22		7,091.47
<b>Total Personnel Services – Employee Benefits</b>	<b>\$483,100.90</b>	<b>\$244,171.54</b>		<b>\$727,272.44</b>
<b>300 <u>Purchased Professional and Technical Services</u></b>				
322 Professional Educational Services – Ius	183,380.50	183,380.50		366,761.00
330 Other Professional Services	200.00	200.00		400.00
<b>Total Purchased Professional and Technical Services</b>	<b>\$183,580.50</b>	<b>\$183,580.50</b>		<b>\$367,161.00</b>
<b>600 <u>Supplies</u></b>				
610 General Supplies	990.72	3,774.27		4,764.99
<b>Total Supplies</b>	<b>\$990.72</b>	<b>\$3,774.27</b>		<b>\$4,764.99</b>
<b>Total 1210 Life Skills Support</b>	<b>\$1,240,869.27</b>	<b>\$732,149.67</b>		<b>\$1,973,018.94</b>

LEA : 118408852      Wilkes-Barre Area SD

Printed 3/5/2019 3:19:42 PM

General Fund (10)				
1220 Sensory Support	<u>Elementary</u>	<u>Secondary</u>	<u>Federal</u>	<u>Total</u>
100 <u>Personnel Services – Salaries</u>				
100 Personnel Services – Salaries	327,269.41	149,568.08		476,837.49
<b>Total Personnel Services – Salaries</b>	<b>\$327,269.41</b>	<b>\$149,568.08</b>		<b>\$476,837.49</b>
200 <u>Personnel Services – Employee Benefits</u>				
210 Group Insurance – Contracted Provider	111,170.46	35,366.64		146,537.10
220 Social Security Contributions	25,036.16	11,442.08		36,478.24
230 PSERS Retirement Contributions	106,218.23	48,100.87		154,319.10
260 Workers' Compensation	2,638.40	1,194.62		3,833.02
<b>Total Personnel Services – Employee Benefits</b>	<b>\$245,063.25</b>	<b>\$96,104.21</b>		<b>\$341,167.46</b>
300 <u>Purchased Professional and Technical Services</u>				
322 Professional Educational Services – Ius	95,809.63	95,809.63	62,439.74	254,059.00
<b>Total Purchased Professional and Technical Services</b>	<b>\$95,809.63</b>	<b>\$95,809.63</b>	<b>\$62,439.74</b>	<b>\$254,059.00</b>
600 <u>Supplies</u>				
610 General Supplies	2,961.36	21.36		2,982.72
640 Books and Periodicals		1,712.44		1,712.44
<b>Total Supplies</b>	<b>\$2,961.36</b>	<b>\$1,733.80</b>		<b>\$4,695.16</b>
<b>Total 1220 Sensory Support</b>	<b>\$671,103.65</b>	<b>\$343,215.72</b>	<b>\$62,439.74</b>	<b>\$1,076,759.11</b>

LEA : 118408852     Wilkes-Barre Area SD

Printed 3/5/2019 3:19:42 PM

<b>General Fund (10)</b>				
<b>1230 Emotional Support</b>	<u>Elementary</u>	<u>Secondary</u>	<u>Federal</u>	<u>Total</u>
<b>100 <u>Personnel Services – Salaries</u></b>				
100 Personnel Services – Salaries	996,471.99	278,224.64		1,274,696.63
<b>Total Personnel Services – Salaries</b>	<b>\$996,471.99</b>	<b>\$278,224.64</b>		<b>\$1,274,696.63</b>
<b>200 <u>Personnel Services – Employee Benefits</u></b>				
210 Group Insurance – Contracted Provider	437,537.97	116,894.84		554,432.81
220 Social Security Contributions	76,120.42	21,284.04		97,404.46
230 PSERS Retirement Contributions	324,873.37	90,693.09		415,566.46
260 Workers' Compensation	8,083.61	2,260.34		10,343.95
<b>Total Personnel Services – Employee Benefits</b>	<b>\$846,615.37</b>	<b>\$231,132.31</b>		<b>\$1,077,747.68</b>
<b>300 <u>Purchased Professional and Technical Services</u></b>				
322 Professional Educational Services – Ius	309,091.37	309,091.37		618,182.74
330 Other Professional Services	54,901.65	54,901.64		109,803.29
<b>Total Purchased Professional and Technical Services</b>	<b>\$363,993.02</b>	<b>\$363,993.01</b>		<b>\$727,986.03</b>
<b>500 <u>Other Purchased Services</u></b>				
568 Tuition To Private Residential Rehabilitative Institutions (PRRI) [In-State] and Detention Centers	783,038.32	825,470.32		1,608,508.64
580 Travel	86.49	86.49		172.98
<b>Total Other Purchased Services</b>	<b>\$783,124.81</b>	<b>\$825,556.81</b>		<b>\$1,608,681.62</b>
<b>600 <u>Supplies</u></b>				
610 General Supplies	3,413.52	2,371.03		5,784.55
<b>Total Supplies</b>	<b>\$3,413.52</b>	<b>\$2,371.03</b>		<b>\$5,784.55</b>
<b>Total 1230 Emotional Support</b>	<b>\$2,993,618.71</b>	<b>\$1,701,277.80</b>		<b>\$4,694,896.51</b>

LEA : 118408852     Wilkes-Barre Area SD

Printed 3/5/2019 3:19:42 PM

<b>General Fund (10)</b>				
<b>1240 Academic Support</b>	<b><u>Elementary</u></b>	<b><u>Secondary</u></b>	<b><u>Federal</u></b>	<b><u>Total</u></b>
<b>100 <u>Personnel Services – Salaries</u></b>				
100 Personnel Services – Salaries	1,972,366.15	1,884,458.22	761,921.70	4,618,746.07
<b>Total Personnel Services – Salaries</b>	<b>\$1,972,366.15</b>	<b>\$1,884,458.22</b>	<b>\$761,921.70</b>	<b>\$4,618,746.07</b>
<b>200 <u>Personnel Services – Employee Benefits</u></b>				
210 Group Insurance – Contracted Provider	672,298.77	696,291.84	13,960.14	1,382,550.75
220 Social Security Contributions	175,122.60	176,550.74	2,803.54	354,476.88
230 PSERS Retirement Contributions	746,069.24	695,793.89	11,936.14	1,453,799.27
260 Workers' Compensation	18,443.18	18,201.36	612.81	37,257.35
<b>Total Personnel Services – Employee Benefits</b>	<b>\$1,611,933.79</b>	<b>\$1,586,837.83</b>	<b>\$29,312.63</b>	<b>\$3,228,084.25</b>
<b>300 <u>Purchased Professional and Technical Services</u></b>				
390 Other Purchased Professional and Technical Services	181,534.21			181,534.21
<b>Total Purchased Professional and Technical Services</b>	<b>\$181,534.21</b>			<b>\$181,534.21</b>
<b>500 <u>Other Purchased Services</u></b>				
562 Tuition To Pennsylvania Charter Schools	1,312,058.98	1,312,058.99		2,624,117.97
580 Travel	1,996.67			1,996.67
<b>Total Other Purchased Services</b>	<b>\$1,314,055.65</b>	<b>\$1,312,058.99</b>		<b>\$2,626,114.64</b>
<b>600 <u>Supplies</u></b>				
610 General Supplies	26,563.93	1,583.73		28,147.66
640 Books and Periodicals	9,480.01	7,172.31		16,652.32
<b>Total Supplies</b>	<b>\$36,043.94</b>	<b>\$8,756.04</b>		<b>\$44,799.98</b>
<b>Total 1240 Academic Support</b>	<b>\$5,115,933.74</b>	<b>\$4,792,111.08</b>	<b>\$791,234.33</b>	<b>\$10,699,279.15</b>

LEA : 118408852      Wilkes-Barre Area SD

Printed 3/5/2019 3:19:42 PM

<b>General Fund (10)</b>				
<b>1241 Learning Support – Public</b>	<u><b>Elementary</b></u>	<u><b>Secondary</b></u>	<u><b>Federal</b></u>	<u><b>Total</b></u>
<b>100 Personnel Services – Salaries</b>				
100 Personnel Services – Salaries	1,328,997.85	1,708,170.37	761,921.70	3,799,089.92
<b>Total Personnel Services – Salaries</b>	<b>\$1,328,997.85</b>	<b>\$1,708,170.37</b>	<b>\$761,921.70</b>	<b>\$3,799,089.92</b>
<b>200 Personnel Services – Employee Benefits</b>				
210 Group Insurance – Contracted Provider	526,128.73	646,283.93	13,960.14	1,186,372.80
220 Social Security Contributions	125,905.44	163,064.65	2,803.54	291,773.63
230 PSERS Retirement Contributions	535,875.64	638,150.44	11,936.14	1,185,962.22
260 Workers' Compensation	13,216.60	16,768.78	612.81	30,598.19
<b>Total Personnel Services – Employee Benefits</b>	<b>\$1,201,126.41</b>	<b>\$1,464,267.80</b>	<b>\$29,312.63</b>	<b>\$2,694,706.84</b>
<b>300 Purchased Professional and Technical Services</b>				
390 Other Purchased Professional and Technical Services	181,534.21			181,534.21
<b>Total Purchased Professional and Technical Services</b>	<b>\$181,534.21</b>			<b>\$181,534.21</b>
<b>500 Other Purchased Services</b>				
562 Tuition To Pennsylvania Charter Schools	1,312,058.98	1,312,058.99		2,624,117.97
580 Travel	1,996.67			1,996.67
<b>Total Other Purchased Services</b>	<b>\$1,314,055.65</b>	<b>\$1,312,058.99</b>		<b>\$2,626,114.64</b>
<b>600 Supplies</b>				
610 General Supplies	25,161.88	1,583.73		26,745.61
640 Books and Periodicals	9,480.01	7,172.31		16,652.32
<b>Total Supplies</b>	<b>\$34,641.89</b>	<b>\$8,756.04</b>		<b>\$43,397.93</b>
<b>Total 1241 Learning Support – Public</b>	<b>\$4,060,356.01</b>	<b>\$4,493,253.20</b>	<b>\$791,234.33</b>	<b>\$9,344,843.54</b>



LEA : 118408852      Wilkes-Barre Area SD

Printed 3/5/2019 3:19:42 PM

<b>General Fund (10)</b>				
<b>1243 Gifted Support</b>	<u><b>Elementary</b></u>	<u><b>Secondary</b></u>	<u><b>Federal</b></u>	<u><b>Total</b></u>
<b>100 <u>Personnel Services – Salaries</u></b>				
100 Personnel Services – Salaries	643,368.30	176,287.85		819,656.15
<b>Total Personnel Services – Salaries</b>	<b>\$643,368.30</b>	<b>\$176,287.85</b>		<b>\$819,656.15</b>
<b>200 <u>Personnel Services – Employee Benefits</u></b>				
210 Group Insurance – Contracted Provider	146,170.04	50,007.91		196,177.95
220 Social Security Contributions	49,217.16	13,486.09		62,703.25
230 PSERS Retirement Contributions	210,193.60	57,643.45		267,837.05
260 Workers' Compensation	5,226.58	1,432.58		6,659.16
<b>Total Personnel Services – Employee Benefits</b>	<b>\$410,807.38</b>	<b>\$122,570.03</b>		<b>\$533,377.41</b>
<b>600 <u>Supplies</u></b>				
610 General Supplies	1,402.05			1,402.05
<b>Total Supplies</b>	<b>\$1,402.05</b>			<b>\$1,402.05</b>
<b>Total 1243 Gifted Support</b>	<b>\$1,055,577.73</b>	<b>\$298,857.88</b>		<b>\$1,354,435.61</b>

LEA : 118408852     Wilkes-Barre Area SD

Printed 3/5/2019 3:19:42 PM

General Fund (10)

1270 Multi-Handicapped Support	<u>Elementary</u>	<u>Secondary</u>	<u>Federal</u>	<u>Total</u>
300 <u>Purchased Professional and Technical Services</u>				
322 Professional Educational Services – lus	326,675.31	194,785.50		521,460.81
Total Purchased Professional and Technical Services	\$326,675.31	\$194,785.50		\$521,460.81
Total 1270 Multi-Handicapped Support	\$326,675.31	\$194,785.50		\$521,460.81

LEA : 118408852     Wilkes-Barre Area SD

Printed 3/5/2019 3:19:42 PM

General Fund (10)

1290 Special Programs - Other Support	<u>Elementary</u>	<u>Secondary</u>	<u>Federal</u>	<u>Total</u>
500 <u>Other Purchased Services</u>				
561 Tuition To Other School Districts Within the State	157,789.84	224,407.13		382,196.97
567 Tuition To Approved Private Schools (APS) and PA Chartered Schools for the Deaf and Blind	45,840.55	45,840.55		91,681.10
594 IU Payment By Withholding for Institutionalized Children's Programs – Special Classes	7,163.89	1,072,640.91		1,079,804.80
<b>Total Other Purchased Services</b>	<b>\$210,794.28</b>	<b>\$1,342,888.59</b>		<b>\$1,553,682.87</b>
<b>Total 1290 Special Programs - Other Support</b>	<b>\$210,794.28</b>	<b>\$1,342,888.59</b>		<b>\$1,553,682.87</b>

LEA : 118408852     Wilkes-Barre Area SD

Printed 3/5/2019 3:19:42 PM

General Fund (10)

1300 Vocational Education

	<u>Elementary</u>	<u>Secondary</u>	<u>Federal</u>	<u>Total</u>
<b>100 <u>Personnel Services – Salaries</u></b>				
100 Personnel Services – Salaries		363,068.20		363,068.20
<b>Total Personnel Services – Salaries</b>		<b>\$363,068.20</b>		<b>\$363,068.20</b>
<b>200 <u>Personnel Services – Employee Benefits</u></b>				
210 Group Insurance – Contracted Provider		110,441.69		110,441.69
220 Social Security Contributions		25,252.82		25,252.82
230 PSERS Retirement Contributions		104,702.86		104,702.86
260 Workers' Compensation		2,664.00		2,664.00
<b>Total Personnel Services – Employee Benefits</b>		<b>\$243,061.37</b>		<b>\$243,061.37</b>
<b>500 <u>Other Purchased Services</u></b>				
564 Tuition To Career and Technology Centers		2,869,323.95		2,869,323.95
<b>Total Other Purchased Services</b>		<b>\$2,869,323.95</b>		<b>\$2,869,323.95</b>
<b>Total 1300 Vocational Education</b>		<b>\$3,475,453.52</b>		<b>\$3,475,453.52</b>

LEA : 118408852      Wilkes-Barre Area SD

Printed 3/5/2019 3:19:42 PM

<b>General Fund (10)</b>				
<b>1400 Other Instructional Programs – Elementary / Secondary</b>	<b><u>Elementary</u></b>	<b><u>Secondary</u></b>	<b><u>Federal</u></b>	<b><u>Total</u></b>
<b>100 <u>Personnel Services – Salaries</u></b>				
100 Personnel Services – Salaries	37,059.60	424,534.81		461,594.41
<b>Total Personnel Services – Salaries</b>	<b>\$37,059.60</b>	<b>\$424,534.81</b>		<b>\$461,594.41</b>
<b>200 <u>Personnel Services – Employee Benefits</u></b>				
210 Group Insurance – Contracted Provider		9,659.74		9,659.74
220 Social Security Contributions	6,827.97	35,762.91		42,590.88
230 PSERS Retirement Contributions	13,467.94	139,081.03		152,548.97
260 Workers' Compensation	335.64	3,547.66		3,883.30
<b>Total Personnel Services – Employee Benefits</b>	<b>\$20,631.55</b>	<b>\$188,051.34</b>		<b>\$208,682.89</b>
<b>300 <u>Purchased Professional and Technical Services</u></b>				
322 Professional Educational Services – Ius	29,429.16	575,570.00		604,999.16
390 Other Purchased Professional and Technical Services	9,250.00	9,250.00		18,500.00
<b>Total Purchased Professional and Technical Services</b>	<b>\$38,679.16</b>	<b>\$584,820.00</b>		<b>\$623,499.16</b>
<b>500 <u>Other Purchased Services</u></b>				
561 Tuition To Other School Districts Within the State	351,931.21	351,931.20		703,862.41
<b>Total Other Purchased Services</b>	<b>\$351,931.21</b>	<b>\$351,931.20</b>		<b>\$703,862.41</b>
<b>600 <u>Supplies</u></b>				
610 General Supplies	1,170.80	1,170.79		2,341.59
<b>Total Supplies</b>	<b>\$1,170.80</b>	<b>\$1,170.79</b>		<b>\$2,341.59</b>
<b>Total 1400 Other Instructional Programs – Elementary / Secondary</b>	<b>\$449,472.32</b>	<b>\$1,550,508.14</b>		<b>\$1,999,980.46</b>

LEA : 118408852     Wilkes-Barre Area SD

Printed 3/5/2019 3:19:42 PM

General Fund (10)

1420 Summer School

	<u>Elementary</u>	<u>Secondary</u>	<u>Federal</u>	<u>Total</u>
<b>100 <u>Personnel Services – Salaries</u></b>				
100 Personnel Services – Salaries		27,500.00		27,500.00
<b>Total Personnel Services – Salaries</b>		<b>\$27,500.00</b>		<b>\$27,500.00</b>
<b>200 <u>Personnel Services – Employee Benefits</u></b>				
220 Social Security Contributions	3,947.52	4,256.75		8,204.27
230 PSERS Retirement Contributions	1,194.34	9,570.05		10,764.39
260 Workers’ Compensation	29.79	239.64		269.43
<b>Total Personnel Services – Employee Benefits</b>	<b>\$5,171.65</b>	<b>\$14,066.44</b>		<b>\$19,238.09</b>
<b>Total 1420 Summer School</b>	<b>\$5,171.65</b>	<b>\$41,566.44</b>		<b>\$46,738.09</b>

LEA : 118408852     Wilkes-Barre Area SD

Printed 3/5/2019 3:19:42 PM

General Fund (10)

1430 Homebound Instruction	<u>Elementary</u>	<u>Secondary</u>	<u>Federal</u>	<u>Total</u>
<b>100 <u>Personnel Services – Salaries</u></b>				
100 Personnel Services – Salaries	37,059.60	321,500.81		358,560.41
<b>Total Personnel Services – Salaries</b>	<b>\$37,059.60</b>	<b>\$321,500.81</b>		<b>\$358,560.41</b>
<b>200 <u>Personnel Services – Employee Benefits</u></b>				
220 Social Security Contributions	2,880.45	25,752.67		28,633.12
230 PSERS Retirement Contributions	12,273.60	105,015.40		117,289.00
260 Workers’ Compensation	305.85	2,696.96		3,002.81
<b>Total Personnel Services – Employee Benefits</b>	<b>\$15,459.90</b>	<b>\$133,465.03</b>		<b>\$148,924.93</b>
<b>Total 1430 Homebound Instruction</b>	<b>\$52,519.50</b>	<b>\$454,965.84</b>		<b>\$507,485.34</b>

LEA : 118408852     Wilkes-Barre Area SD

Printed 3/5/2019 3:19:42 PM

General Fund (10)

1440 Alternative Regular Education Programs	<u>Elementary</u>	<u>Secondary</u>	<u>Federal</u>	<u>Total</u>
300 <u>Purchased Professional and Technical Services</u>				
322 Professional Educational Services – lus	29,429.16	575,570.00		604,999.16
Total Purchased Professional and Technical Services	\$29,429.16	\$575,570.00		\$604,999.16
500 <u>Other Purchased Services</u>				
561 Tuition To Other School Districts Within the State	351,931.21	351,931.20		703,862.41
Total Other Purchased Services	\$351,931.21	\$351,931.20		\$703,862.41
Total 1440 Alternative Regular Education Programs	\$381,360.37	\$927,501.20		\$1,308,861.57



LEA : 118408852     Wilkes-Barre Area SD

Printed 3/5/2019 3:19:42 PM

General Fund (10)

1441 Adjudicated / Court-Placed Programs	<u>Elementary</u>	<u>Secondary</u>	<u>Federal</u>	<u>Total</u>
500 <u>Other Purchased Services</u>				
561 Tuition To Other School Districts Within the State	38,190.32	38,190.32		76,380.64
Total Other Purchased Services	\$38,190.32	\$38,190.32		\$76,380.64
Total 1441 Adjudicated / Court-Placed Programs	\$38,190.32	\$38,190.32		\$76,380.64

LEA : 118408852     Wilkes-Barre Area SD

Printed 3/5/2019 3:19:42 PM

General Fund (10)

1442 Alternative Education Programs	<u>Elementary</u>	<u>Secondary</u>	<u>Federal</u>	<u>Total</u>
300 <u>Purchased Professional and Technical Services</u>				
322 Professional Educational Services – lus	29,429.16	575,570.00		604,999.16
Total Purchased Professional and Technical Services	\$29,429.16	\$575,570.00		\$604,999.16
500 <u>Other Purchased Services</u>				
561 Tuition To Other School Districts Within the State	313,740.89	313,740.88		627,481.77
Total Other Purchased Services	\$313,740.89	\$313,740.88		\$627,481.77
Total 1442 Alternative Education Programs	\$343,170.05	\$889,310.88		\$1,232,480.93

LEA : 118408852      Wilkes-Barre Area SD

Printed 3/5/2019 3:19:42 PM

General Fund (10)				
1490 Additional Other Instructional Programs	<u>Elementary</u>	<u>Secondary</u>	<u>Federal</u>	<u>Total</u>
100 <u>Personnel Services – Salaries</u>				
100 Personnel Services – Salaries		75,534.00		75,534.00
Total Personnel Services – Salaries		\$75,534.00		\$75,534.00
200 <u>Personnel Services – Employee Benefits</u>				
210 Group Insurance – Contracted Provider		9,659.74		9,659.74
220 Social Security Contributions		5,753.49		5,753.49
230 PSERS Retirement Contributions		24,495.58		24,495.58
260 Workers' Compensation		611.06		611.06
Total Personnel Services – Employee Benefits		\$40,519.87		\$40,519.87
300 <u>Purchased Professional and Technical Services</u>				
390 Other Purchased Professional and Technical Services	9,250.00	9,250.00		18,500.00
Total Purchased Professional and Technical Services	\$9,250.00	\$9,250.00		\$18,500.00
600 <u>Supplies</u>				
610 General Supplies	1,170.80	1,170.79		2,341.59
Total Supplies	\$1,170.80	\$1,170.79		\$2,341.59
Total 1490 Additional Other Instructional Programs	\$10,420.80	\$126,474.66		\$136,895.46

LEA : 118408852     Wilkes-Barre Area SD

Printed 3/5/2019 3:19:48 PM

<b>General Fund (10)</b>	
<b>2000 Support Services</b>	<b><u>Total</u></b>
<b>100 <u>Personnel Services – Salaries</u></b>	
100 Personnel Services – Salaries	11,125,260.19
<b>Total Personnel Services – Salaries</b>	<b>\$11,125,260.19</b>
<b>200 <u>Personnel Services – Employee Benefits</u></b>	
210 Group Insurance – Contracted Provider	3,739,877.09
220 Social Security Contributions	856,784.77
230 PSERS Retirement Contributions	3,527,507.79
260 Workers’ Compensation	92,337.92
<b>Total Personnel Services – Employee Benefits</b>	<b>\$8,216,507.57</b>
<b>300 <u>Purchased Professional and Technical Services</u></b>	
310 Official / Administrative Services	98,767.03
330 Other Professional Services	830,930.77
340 Technical Services	132,430.72
390 Other Purchased Professional and Technical Services	460,937.12
<b>Total Purchased Professional and Technical Services</b>	<b>\$1,523,065.64</b>
<b>400 <u>Purchased Property Services</u></b>	
410 Cleaning Services	122,323.19
420 Utility Services	860,799.97
430 Repairs and Maintenance Services	604,172.73
440 Rentals	27,907.60
460 Extermination Services	19,869.00
490 Other Purchased Property Services	28,415.39
<b>Total Purchased Property Services</b>	<b>\$1,663,487.88</b>
<b>500 <u>Other Purchased Services</u></b>	
513 Contracted Carriers	3,132,766.43
515 Public Carriers	44,924.00
516 Student Transportation Services From the IU	991,965.13
520 Insurance – General	23,466.00
521 Fire Insurance	158,232.00
523 General Property and Liability Insurance	51,449.88
529 Other Insurance	30,486.50
530 Communications	247,376.16
549 Other Advertising/Public Relations	4,292.82
550 Printing and Binding	5,778.45
580 Travel	55,652.85
595 IU Payments By Withholding	125,559.38
599 Other Miscellaneous Purchased Services	12,076.50
<b>Total Other Purchased Services</b>	<b>\$4,884,026.10</b>
<b>600 <u>Supplies</u></b>	
610 General Supplies	444,297.12
620 Energy	822,108.76
640 Books and Periodicals	73,513.85
<b>Total Supplies</b>	<b>\$1,339,919.73</b>

LEA : 118408852     Wilkes-Barre Area SD

Printed 3/5/2019 3:19:48 PM

General Fund (10)		
2000 Support Services		<u>Total</u>
800	<u>Other Objects</u>	
810	Dues and Fees	20,641.34
890	Miscellaneous Expenditures	3,810.00
Total Other Objects		\$24,451.34
Total 2000 Support Services		\$28,776,718.45

LEA : 118408852     Wilkes-Barre Area SD

Printed 3/5/2019 3:19:48 PM

General Fund (10)				
2100 Support Services – Students	<u>Elementary</u>	<u>Secondary</u>	<u>Federal</u>	<u>Total</u>
100 <u>Personnel Services – Salaries</u>				
100 Personnel Services – Salaries	615,860.80	890,622.29		1,754,216.04
<b>Total Personnel Services – Salaries</b>	<b>\$615,860.80</b>	<b>\$890,622.29</b>		<b>\$1,754,216.04</b>
200 <u>Personnel Services – Employee Benefits</u>				
210 Group Insurance – Contracted Provider	236,568.56	304,483.64		612,496.17
220 Social Security Contributions	47,320.73	65,552.89		131,839.07
230 PSERS Retirement Contributions	202,002.65	265,681.70		548,714.72
260 Workers' Compensation	4,914.74	7,251.09		14,178.45
<b>Total Personnel Services – Employee Benefits</b>	<b>\$490,806.68</b>	<b>\$642,969.32</b>		<b>\$1,307,228.41</b>
300 <u>Purchased Professional and Technical Services</u>				
330 Other Professional Services	4,750.00			77,307.20
390 Other Purchased Professional and Technical Services	195.00	195.00		390.00
<b>Total Purchased Professional and Technical Services</b>	<b>\$4,945.00</b>	<b>\$195.00</b>		<b>\$77,697.20</b>
500 <u>Other Purchased Services</u>				
580 Travel	849.31	849.30		4,252.94
<b>Total Other Purchased Services</b>	<b>\$849.31</b>	<b>\$849.30</b>		<b>\$4,252.94</b>
600 <u>Supplies</u>				
610 General Supplies	5,907.81	5,907.79		13,056.55
<b>Total Supplies</b>	<b>\$5,907.81</b>	<b>\$5,907.79</b>		<b>\$13,056.55</b>
<b>Total 2100 Support Services – Students</b>	<b>\$1,118,369.60</b>	<b>\$1,540,543.70</b>		<b>\$3,156,451.14</b>

LEA : 118408852     Wilkes-Barre Area SD

Printed 3/5/2019 3:19:48 PM

General Fund (10)

2110 Supervision of Student Services	<u>Elementary</u>	<u>Secondary</u>	<u>Federal</u>	<u>Total</u>
100 <u>Personnel Services – Salaries</u>				
100 Personnel Services – Salaries	145,226.92	145,226.92		290,453.84
<b>Total Personnel Services – Salaries</b>	<b>\$145,226.92</b>	<b>\$145,226.92</b>		<b>\$290,453.84</b>
200 <u>Personnel Services – Employee Benefits</u>				
210 Group Insurance – Contracted Provider	32,879.21	32,879.21		65,758.42
220 Social Security Contributions	11,403.63	11,403.63		22,807.26
230 PSERS Retirement Contributions	48,577.30	48,577.30		97,154.60
260 Workers' Compensation	1,217.21	1,217.20		2,434.41
<b>Total Personnel Services – Employee Benefits</b>	<b>\$94,077.35</b>	<b>\$94,077.34</b>		<b>\$188,154.69</b>
500 <u>Other Purchased Services</u>				
580 Travel	75.00	75.00		150.00
<b>Total Other Purchased Services</b>	<b>\$75.00</b>	<b>\$75.00</b>		<b>\$150.00</b>
<b>Total 2110 Supervision of Student Services</b>	<b>\$239,379.27</b>	<b>\$239,379.26</b>		<b>\$478,758.53</b>

LEA : 118408852      Wilkes-Barre Area SD

Printed 3/5/2019 3:19:48 PM

General Fund (10)

2111 Supervision of Student Services – Head of Component	Elementary	Secondary	Federal	Total
100 <u>Personnel Services – Salaries</u>				
100 Personnel Services – Salaries	145,226.92	145,226.92		290,453.84
<b>Total Personnel Services – Salaries</b>	<b>\$145,226.92</b>	<b>\$145,226.92</b>		<b>\$290,453.84</b>
200 <u>Personnel Services – Employee Benefits</u>				
210 Group Insurance – Contracted Provider	32,879.21	32,879.21		65,758.42
220 Social Security Contributions	11,403.63	11,403.63		22,807.26
230 PSERS Retirement Contributions	48,577.30	48,577.30		97,154.60
260 Workers' Compensation	1,217.21	1,217.20		2,434.41
<b>Total Personnel Services – Employee Benefits</b>	<b>\$94,077.35</b>	<b>\$94,077.34</b>		<b>\$188,154.69</b>
500 <u>Other Purchased Services</u>				
580 Travel	75.00	75.00		150.00
<b>Total Other Purchased Services</b>	<b>\$75.00</b>	<b>\$75.00</b>		<b>\$150.00</b>
<b>Total 2111 Supervision of Student Services – Head of Component</b>	<b>\$239,379.27</b>	<b>\$239,379.26</b>		<b>\$478,758.53</b>



LEA : 118408852     Wilkes-Barre Area SD

Printed 3/5/2019 3:19:48 PM

<b>General Fund (10)</b>				
<b>2120 Guidance Services</b>	<u><b>Elementary</b></u>	<u><b>Secondary</b></u>	<u><b>Federal</b></u>	<u><b>Total</b></u>
<b>100 <u>Personnel Services – Salaries</u></b>				
100 Personnel Services – Salaries	330,759.48	605,520.98		936,280.46
<b>Total Personnel Services – Salaries</b>	<b>\$330,759.48</b>	<b>\$605,520.98</b>		<b>\$936,280.46</b>
<b>200 <u>Personnel Services – Employee Benefits</u></b>				
210 Group Insurance – Contracted Provider	159,650.79	227,565.87		387,216.66
220 Social Security Contributions	25,387.15	43,619.33		69,006.48
230 PSERS Retirement Contributions	108,422.87	172,101.94		280,524.81
260 Workers' Compensation	2,579.35	4,915.73		7,495.08
<b>Total Personnel Services – Employee Benefits</b>	<b>\$296,040.16</b>	<b>\$448,202.87</b>		<b>\$744,243.03</b>
<b>300 <u>Purchased Professional and Technical Services</u></b>				
390 Other Purchased Professional and Technical Services	195.00	195.00		390.00
<b>Total Purchased Professional and Technical Services</b>	<b>\$195.00</b>	<b>\$195.00</b>		<b>\$390.00</b>
<b>600 <u>Supplies</u></b>				
610 General Supplies	281.55	281.54		563.09
<b>Total Supplies</b>	<b>\$281.55</b>	<b>\$281.54</b>		<b>\$563.09</b>
<b>Total 2120 Guidance Services</b>	<b>\$627,276.19</b>	<b>\$1,054,200.39</b>		<b>\$1,681,476.58</b>

LEA : 118408852     Wilkes-Barre Area SD

Printed 3/5/2019 3:19:48 PM

General Fund (10)

2130 Attendance Services

Elementary                      Secondary                      Federal                      Total

100 <u>Personnel Services – Salaries</u>				
100 Personnel Services – Salaries				211,078.00
<b>Total Personnel Services – Salaries</b>				<b>\$211,078.00</b>
200 <u>Personnel Services – Employee Benefits</u>				
210 Group Insurance – Contracted Provider				53,342.60
220 Social Security Contributions				16,161.27
230 PSERS Retirement Contributions				69,128.64
260 Workers' Compensation				1,716.09
<b>Total Personnel Services – Employee Benefits</b>				<b>\$140,348.60</b>
500 <u>Other Purchased Services</u>				
580 Travel				2,554.33
<b>Total Other Purchased Services</b>				<b>\$2,554.33</b>
<b>Total 2130 Attendance Services</b>				<b>\$353,980.93</b>

LEA : 118408852      Wilkes-Barre Area SD

Printed 3/5/2019 3:19:48 PM

<b>General Fund (10)</b>				
<b>2140 Psychological Services</b>	<b><u>Elementary</u></b>	<b><u>Secondary</u></b>	<b><u>Federal</u></b>	<b><u>Total</u></b>
<b>100 <u>Personnel Services – Salaries</u></b>				
100 Personnel Services – Salaries	139,874.40	139,874.39		279,748.79
<b>Total Personnel Services – Salaries</b>	<b>\$139,874.40</b>	<b>\$139,874.39</b>		<b>\$279,748.79</b>
<b>200 <u>Personnel Services – Employee Benefits</u></b>				
210 Group Insurance – Contracted Provider	44,038.56	44,038.56		88,077.12
220 Social Security Contributions	10,529.95	10,529.93		21,059.88
230 PSERS Retirement Contributions	45,002.48	45,002.46		90,004.94
260 Workers' Compensation	1,118.18	1,118.16		2,236.34
<b>Total Personnel Services – Employee Benefits</b>	<b>\$100,689.17</b>	<b>\$100,689.11</b>		<b>\$201,378.28</b>
<b>300 <u>Purchased Professional and Technical Services</u></b>				
330 Other Professional Services	4,750.00			4,750.00
<b>Total Purchased Professional and Technical Services</b>	<b>\$4,750.00</b>			<b>\$4,750.00</b>
<b>500 <u>Other Purchased Services</u></b>				
580 Travel	774.31	774.30		1,548.61
<b>Total Other Purchased Services</b>	<b>\$774.31</b>	<b>\$774.30</b>		<b>\$1,548.61</b>
<b>600 <u>Supplies</u></b>				
610 General Supplies	5,626.26	5,626.25		11,252.51
<b>Total Supplies</b>	<b>\$5,626.26</b>	<b>\$5,626.25</b>		<b>\$11,252.51</b>
<b>Total 2140 Psychological Services</b>	<b>\$251,714.14</b>	<b>\$246,964.05</b>		<b>\$498,678.19</b>

LEA : 118408852     Wilkes-Barre Area SD

Printed 3/5/2019 3:19:48 PM

General Fund (10)

2160 Social Work Services

Elementary                      Secondary                      Federal                      Total

300 Purchased Professional and Technical Services

330 Other Professional Services 63,907.20

**Total Purchased Professional and Technical Services \$63,907.20**

**Total 2160 Social Work Services \$63,907.20**

LEA : 118408852     Wilkes-Barre Area SD

Printed 3/5/2019 3:19:48 PM

General Fund (10)				
2170 Student Accounting Services	<u>Elementary</u>	<u>Secondary</u>	<u>Federal</u>	<u>Total</u>
100 <u>Personnel Services – Salaries</u>				
100 Personnel Services – Salaries				36,654.95
Total Personnel Services – Salaries				\$36,654.95
200 <u>Personnel Services – Employee Benefits</u>				
210 Group Insurance – Contracted Provider				18,101.37
220 Social Security Contributions				2,804.18
230 PSERS Retirement Contributions				11,901.73
260 Workers' Compensation				296.53
Total Personnel Services – Employee Benefits				\$33,103.81
300 <u>Purchased Professional and Technical Services</u>				
330 Other Professional Services				8,650.00
Total Purchased Professional and Technical Services				\$8,650.00
600 <u>Supplies</u>				
610 General Supplies				1,240.95
Total Supplies				\$1,240.95
Total 2170 Student Accounting Services				\$79,649.71

LEA : 118408852      Wilkes-Barre Area SD

Printed 3/5/2019 3:19:48 PM

<b>General Fund (10)</b>				
<b>2200 Support Services – Instructional Staff</b>	<b><u>Elementary</u></b>	<b><u>Secondary</u></b>	<b><u>Federal</u></b>	<b><u>Total</u></b>
<b>100 <u>Personnel Services – Salaries</u></b>				
100 Personnel Services – Salaries	728,118.91	555,654.51	157,800.42	1,441,573.84
<b>Total Personnel Services – Salaries</b>	<b>\$728,118.91</b>	<b>\$555,654.51</b>	<b>\$157,800.42</b>	<b>\$1,441,573.84</b>
<b>200 <u>Personnel Services – Employee Benefits</u></b>				
210 Group Insurance – Contracted Provider	231,910.33	135,037.45	23,792.26	390,740.04
220 Social Security Contributions	62,836.92	47,423.84	5,974.61	116,235.37
230 PSERS Retirement Contributions	261,491.85	189,190.34	29,072.66	479,754.85
260 Workers' Compensation	6,892.86	5,260.07	714.79	12,867.72
<b>Total Personnel Services – Employee Benefits</b>	<b>\$563,131.96</b>	<b>\$376,911.70</b>	<b>\$59,554.32</b>	<b>\$999,597.98</b>
<b>300 <u>Purchased Professional and Technical Services</u></b>				
340 Technical Services	24,315.89	24,315.89		48,631.78
<b>Total Purchased Professional and Technical Services</b>	<b>\$24,315.89</b>	<b>\$24,315.89</b>		<b>\$48,631.78</b>
<b>500 <u>Other Purchased Services</u></b>				
580 Travel	1,907.22	1,907.21	19,044.71	22,859.14
599 Other Miscellaneous Purchased Services	200.00	200.00		400.00
<b>Total Other Purchased Services</b>	<b>\$2,107.22</b>	<b>\$2,107.21</b>	<b>\$19,044.71</b>	<b>\$23,259.14</b>
<b>600 <u>Supplies</u></b>				
610 General Supplies	4,267.50	3,985.24	4,630.50	12,883.24
640 Books and Periodicals	36,655.53	36,655.52		73,311.05
<b>Total Supplies</b>	<b>\$40,923.03</b>	<b>\$40,640.76</b>	<b>\$4,630.50</b>	<b>\$86,194.29</b>
<b>Total 2200 Support Services – Instructional Staff</b>	<b>\$1,358,597.01</b>	<b>\$999,630.07</b>	<b>\$241,029.95</b>	<b>\$2,599,257.03</b>

LEA : 118408852     Wilkes-Barre Area SD

Printed 3/5/2019 3:19:48 PM

General Fund (10)

2210 Supervision of Educational Media Services	Elementary	Secondary	Federal	Total
100 Personnel Services – Salaries				
100 Personnel Services – Salaries	28,160.43	28,160.42		56,320.85
Total Personnel Services – Salaries	\$28,160.43	\$28,160.42		\$56,320.85
200 Personnel Services – Employee Benefits				
210 Group Insurance – Contracted Provider	5,721.90	5,721.90		11,443.80
220 Social Security Contributions	2,154.34	2,154.33		4,308.67
230 PSERS Retirement Contributions	9,153.00	9,153.00		18,306.00
260 Workers' Compensation	228.41	228.40		456.81
Total Personnel Services – Employee Benefits	\$17,257.65	\$17,257.63		\$34,515.28
600 Supplies				
610 General Supplies	282.26			282.26
Total Supplies	\$282.26			\$282.26
Total 2210 Supervision of Educational Media Services	\$45,700.34	\$45,418.05		\$91,118.39

LEA : 118408852     Wilkes-Barre Area SD

Printed 3/5/2019 3:19:48 PM

General Fund (10)				
2211 Supervision of Educational Media Services – Head of Component	<u>Elementary</u>	<u>Secondary</u>	<u>Federal</u>	<u>Total</u>
100 <u>Personnel Services – Salaries</u>				
100 Personnel Services – Salaries	28,160.43	28,160.42		56,320.85
<b>Total Personnel Services – Salaries</b>	<b>\$28,160.43</b>	<b>\$28,160.42</b>		<b>\$56,320.85</b>
200 <u>Personnel Services – Employee Benefits</u>				
210 Group Insurance – Contracted Provider	5,721.90	5,721.90		11,443.80
220 Social Security Contributions	2,154.34	2,154.33		4,308.67
230 PSERS Retirement Contributions	9,153.00	9,153.00		18,306.00
260 Workers' Compensation	228.41	228.40		456.81
<b>Total Personnel Services – Employee Benefits</b>	<b>\$17,257.65</b>	<b>\$17,257.63</b>		<b>\$34,515.28</b>
600 <u>Supplies</u>				
610 General Supplies	282.26			282.26
<b>Total Supplies</b>	<b>\$282.26</b>			<b>\$282.26</b>
<b>Total 2211 Supervision of Educational Media Services – Head of Component</b>	<b>\$45,700.34</b>	<b>\$45,418.05</b>		<b>\$91,118.39</b>



LEA : 118408852      Wilkes-Barre Area SD

Printed 3/5/2019 3:19:48 PM

<b>General Fund (10)</b>				
<b>2220 Technology Support Services</b>	<u><b>Elementary</b></u>	<u><b>Secondary</b></u>	<u><b>Federal</b></u>	<u><b>Total</b></u>
<b>100 <u>Personnel Services – Salaries</u></b>				
100 Personnel Services – Salaries	114,826.30	114,826.30		229,652.60
<b>Total Personnel Services – Salaries</b>	<b>\$114,826.30</b>	<b>\$114,826.30</b>		<b>\$229,652.60</b>
<b>200 <u>Personnel Services – Employee Benefits</u></b>				
210 Group Insurance – Contracted Provider	35,702.28	35,702.28		71,404.56
220 Social Security Contributions	8,791.52	8,791.52		17,583.04
230 PSERS Retirement Contributions	37,372.65	37,372.65		74,745.30
260 Workers' Compensation	936.44	936.44		1,872.88
<b>Total Personnel Services – Employee Benefits</b>	<b>\$82,802.89</b>	<b>\$82,802.89</b>		<b>\$165,605.78</b>
<b>300 <u>Purchased Professional and Technical Services</u></b>				
340 Technical Services	16,569.94	16,569.94		33,139.88
<b>Total Purchased Professional and Technical Services</b>	<b>\$16,569.94</b>	<b>\$16,569.94</b>		<b>\$33,139.88</b>
<b>500 <u>Other Purchased Services</u></b>				
580 Travel	274.73	274.73		549.46
<b>Total Other Purchased Services</b>	<b>\$274.73</b>	<b>\$274.73</b>		<b>\$549.46</b>
<b>600 <u>Supplies</u></b>				
610 General Supplies	3,985.24	3,985.24		7,970.48
640 Books and Periodicals	36,655.53	36,655.52		73,311.05
<b>Total Supplies</b>	<b>\$40,640.77</b>	<b>\$40,640.76</b>		<b>\$81,281.53</b>
<b>Total 2220 Technology Support Services</b>	<b>\$255,114.63</b>	<b>\$255,114.62</b>		<b>\$510,229.25</b>

LEA : 118408852     Wilkes-Barre Area SD

Printed 3/5/2019 3:19:48 PM

General Fund (10)

2250 School Library Services	Elementary	Secondary	Federal	Total
100 Personnel Services – Salaries				
100 Personnel Services – Salaries	12,060.48			12,060.48
Total Personnel Services – Salaries	\$12,060.48			\$12,060.48
200 Personnel Services – Employee Benefits				
210 Group Insurance – Contracted Provider	7,678.10			7,678.10
220 Social Security Contributions	922.68			922.68
230 PSERS Retirement Contributions	1,938.84			1,938.84
260 Workers' Compensation	97.94			97.94
Total Personnel Services – Employee Benefits	\$10,637.56			\$10,637.56
Total 2250 School Library Services	\$22,698.04			\$22,698.04

LEA : 118408852     Wilkes-Barre Area SD

Printed 3/5/2019 3:19:48 PM

General Fund (10)				
2260 Instruction and Curriculum Development Services	<u>Elementary</u>	<u>Secondary</u>	<u>Federal</u>	<u>Total</u>
100 <u>Personnel Services – Salaries</u>				
100 Personnel Services – Salaries	393,632.36	243,042.46	71,919.66	708,594.48
<b>Total Personnel Services – Salaries</b>	<b>\$393,632.36</b>	<b>\$243,042.46</b>	<b>\$71,919.66</b>	<b>\$708,594.48</b>
200 <u>Personnel Services – Employee Benefits</u>				
210 Group Insurance – Contracted Provider	150,491.35	61,296.58	23,792.26	235,580.19
220 Social Security Contributions	35,529.17	21,789.77	2,750.93	60,069.87
230 PSERS Retirement Contributions	149,146.66	85,326.17	17,547.21	252,020.04
260 Workers' Compensation	3,674.25	2,219.14	480.97	6,374.36
<b>Total Personnel Services – Employee Benefits</b>	<b>\$338,841.43</b>	<b>\$170,631.66</b>	<b>\$44,571.37</b>	<b>\$554,044.46</b>
500 <u>Other Purchased Services</u>				
580 Travel	1,237.23	1,237.23		2,474.46
599 Other Miscellaneous Purchased Services	200.00	200.00		400.00
<b>Total Other Purchased Services</b>	<b>\$1,437.23</b>	<b>\$1,437.23</b>		<b>\$2,874.46</b>
<b>Total 2260 Instruction and Curriculum Development Services</b>	<b>\$733,911.02</b>	<b>\$415,111.35</b>	<b>\$116,491.03</b>	<b>\$1,265,513.40</b>

LEA : 118408852     Wilkes-Barre Area SD

Printed 3/5/2019 3:19:48 PM

<b>General Fund (10)</b>				
<b>2270 Instructional Staff Professional Development Services</b>	<b><u>Elementary</u></b>	<b><u>Secondary</u></b>	<b><u>Federal</u></b>	<b><u>Total</u></b>
<b>100 <u>Personnel Services – Salaries</u></b>				
100 Personnel Services – Salaries	179,439.34	169,625.33	85,880.76	434,945.43
<b>Total Personnel Services – Salaries</b>	<b>\$179,439.34</b>	<b>\$169,625.33</b>	<b>\$85,880.76</b>	<b>\$434,945.43</b>
<b>200 <u>Personnel Services – Employee Benefits</u></b>				
210 Group Insurance – Contracted Provider	32,316.70	32,316.69		64,633.39
220 Social Security Contributions	15,439.21	14,688.22	3,223.68	33,351.11
230 PSERS Retirement Contributions	63,880.70	57,338.52	11,525.45	132,744.67
260 Workers' Compensation	1,955.82	1,876.09	233.82	4,065.73
<b>Total Personnel Services – Employee Benefits</b>	<b>\$113,592.43</b>	<b>\$106,219.52</b>	<b>\$14,982.95</b>	<b>\$234,794.90</b>
<b>300 <u>Purchased Professional and Technical Services</u></b>				
340 Technical Services	7,745.95	7,745.95		15,491.90
<b>Total Purchased Professional and Technical Services</b>	<b>\$7,745.95</b>	<b>\$7,745.95</b>		<b>\$15,491.90</b>
<b>500 <u>Other Purchased Services</u></b>				
580 Travel	395.26	395.25	19,044.71	19,835.22
<b>Total Other Purchased Services</b>	<b>\$395.26</b>	<b>\$395.25</b>	<b>\$19,044.71</b>	<b>\$19,835.22</b>
<b>600 <u>Supplies</u></b>				
610 General Supplies			4,630.50	4,630.50
<b>Total Supplies</b>			<b>\$4,630.50</b>	<b>\$4,630.50</b>
<b>Total 2270 Instructional Staff Professional Development Services</b>	<b>\$301,172.98</b>	<b>\$283,986.05</b>	<b>\$124,538.92</b>	<b>\$709,697.95</b>

LEA : 118408852     Wilkes-Barre Area SD

Printed 3/5/2019 3:19:48 PM

General Fund (10)				
2300 Support Services – Administration	<u>Elementary</u>	<u>Secondary</u>	<u>Federal</u>	<u>Total</u>
100 <u>Personnel Services – Salaries</u>				
100 Personnel Services – Salaries	1,036,698.60	920,101.04		2,300,343.98
<b>Total Personnel Services – Salaries</b>	<b>\$1,036,698.60</b>	<b>\$920,101.04</b>		<b>\$2,300,343.98</b>
200 <u>Personnel Services – Employee Benefits</u>				
210 Group Insurance – Contracted Provider	384,143.54	312,784.00		747,901.59
220 Social Security Contributions	84,633.37	67,599.62		172,472.60
230 PSERS Retirement Contributions	324,572.42	294,854.07		704,054.01
260 Workers' Compensation	9,002.47	7,615.12		18,768.51
<b>Total Personnel Services – Employee Benefits</b>	<b>\$802,351.80</b>	<b>\$682,852.81</b>		<b>\$1,643,196.71</b>
300 <u>Purchased Professional and Technical Services</u>				
310 Official / Administrative Services				98,767.03
330 Other Professional Services				272,358.59
390 Other Purchased Professional and Technical Services				418,616.22
<b>Total Purchased Professional and Technical Services</b>				<b>\$789,741.84</b>
500 <u>Other Purchased Services</u>				
520 Insurance – General				23,416.00
530 Communications	44.50	44.50		24,813.29
549 Other Advertising/Public Relations				4,292.82
550 Printing and Binding		1,892.01		5,778.45
580 Travel	62.60	684.02		8,289.76
599 Other Miscellaneous Purchased Services				909.74
<b>Total Other Purchased Services</b>	<b>\$107.10</b>	<b>\$2,620.53</b>		<b>\$67,500.06</b>
600 <u>Supplies</u>				
610 General Supplies	3,060.80	5,542.70		13,327.97
640 Books and Periodicals				72.80
<b>Total Supplies</b>	<b>\$3,060.80</b>	<b>\$5,542.70</b>		<b>\$13,400.77</b>
800 <u>Other Objects</u>				
810 Dues and Fees		3,850.00		18,925.00
<b>Total Other Objects</b>		<b>\$3,850.00</b>		<b>\$18,925.00</b>
<b>Total 2300 Support Services – Administration</b>	<b>\$1,842,218.30</b>	<b>\$1,614,967.08</b>		<b>\$4,833,108.36</b>

LEA : 118408852     Wilkes-Barre Area SD

Printed 3/5/2019 3:19:48 PM

General Fund (10)				
2310 Board Services				
	<u>Elementary</u>	<u>Secondary</u>	<u>Federal</u>	<u>Total</u>
100 <u>Personnel Services – Salaries</u>				
100 Personnel Services – Salaries				1,711.95
Total Personnel Services – Salaries				\$1,711.95
200 <u>Personnel Services – Employee Benefits</u>				
220 Social Security Contributions				130.91
230 PSERS Retirement Contributions				637.96
260 Workers’ Compensation				45.51
Total Personnel Services – Employee Benefits				\$814.38
300 <u>Purchased Professional and Technical Services</u>				
330 Other Professional Services				38,400.00
390 Other Purchased Professional and Technical Services				2,533.00
Total Purchased Professional and Technical Services				\$40,933.00
500 <u>Other Purchased Services</u>				
520 Insurance – General				22,988.00
549 Other Advertising/Public Relations				4,292.82
580 Travel				3,235.75
599 Other Miscellaneous Purchased Services				794.74
Total Other Purchased Services				\$31,311.31
600 <u>Supplies</u>				
610 General Supplies				506.44
640 Books and Periodicals				72.80
Total Supplies				\$579.24
800 <u>Other Objects</u>				
810 Dues and Fees				15,025.00
Total Other Objects				\$15,025.00
Total 2310 Board Services				\$90,374.88

LEA : 118408852     Wilkes-Barre Area SD

Printed 3/5/2019 3:19:48 PM

General Fund (10)

2330 Tax Assessment and Collection Services	<u>Elementary</u>	<u>Secondary</u>	<u>Federal</u>	<u>Total</u>
100 <u>Personnel Services – Salaries</u>				
100 Personnel Services – Salaries				34,200.00
<b>Total Personnel Services – Salaries</b>				<b>\$34,200.00</b>
200 <u>Personnel Services – Employee Benefits</u>				
220 Social Security Contributions				2,616.50
<b>Total Personnel Services – Employee Benefits</b>				<b>\$2,616.50</b>
300 <u>Purchased Professional and Technical Services</u>				
310 Official / Administrative Services				98,767.03
390 Other Purchased Professional and Technical Services				349,632.23
<b>Total Purchased Professional and Technical Services</b>				<b>\$448,399.26</b>
500 <u>Other Purchased Services</u>				
520 Insurance – General				428.00
530 Communications				24,724.29
550 Printing and Binding				3,886.44
<b>Total Other Purchased Services</b>				<b>\$29,038.73</b>
600 <u>Supplies</u>				
610 General Supplies				1,666.36
<b>Total Supplies</b>				<b>\$1,666.36</b>
<b>Total 2330 Tax Assessment and Collection Services</b>				<b>\$515,920.85</b>

LEA : 118408852     Wilkes-Barre Area SD

Printed 3/5/2019 3:19:48 PM

General Fund (10)				
2350 Legal and Accounting Services	<u>Elementary</u>	<u>Secondary</u>	<u>Federal</u>	<u>Total</u>
300 <u>Purchased Professional and Technical Services</u>				
330 Other Professional Services				210,514.85
390 Other Purchased Professional and Technical Services				66,450.99
Total Purchased Professional and Technical Services				\$276,965.84
500 <u>Other Purchased Services</u>				
580 Travel				993.00
Total Other Purchased Services				\$993.00
Total 2350 Legal and Accounting Services				\$277,958.84



LEA : 118408852     Wilkes-Barre Area SD

Printed 3/5/2019 3:19:48 PM

General Fund (10)				
2360 Office of the Superintendent / Executive Director Services	<u>Elementary</u>	<u>Secondary</u>	<u>Federal</u>	<u>Total</u>
100 <u>Personnel Services – Salaries</u>				
100 Personnel Services – Salaries				307,632.39
Total Personnel Services – Salaries				\$307,632.39
200 <u>Personnel Services – Employee Benefits</u>				
210 Group Insurance – Contracted Provider				50,974.05
220 Social Security Contributions				17,492.20
230 PSERS Retirement Contributions				83,989.56
260 Workers' Compensation				2,105.41
Total Personnel Services – Employee Benefits				\$154,561.22
300 <u>Purchased Professional and Technical Services</u>				
330 Other Professional Services				23,443.74
Total Purchased Professional and Technical Services				\$23,443.74
500 <u>Other Purchased Services</u>				
530 Communications	44.50	44.50		89.00
580 Travel				3,314.39
599 Other Miscellaneous Purchased Services				115.00
Total Other Purchased Services	\$44.50	\$44.50		\$3,518.39
600 <u>Supplies</u>				
610 General Supplies				2,551.67
Total Supplies				\$2,551.67
800 <u>Other Objects</u>				
810 Dues and Fees				50.00
Total Other Objects				\$50.00
Total 2360 Office of the Superintendent / Executive Director Services	\$44.50	\$44.50		\$491,757.41

LEA : 118408852     Wilkes-Barre Area SD

Printed 3/5/2019 3:19:48 PM

General Fund (10)				
2380 Office of the Principal Services	<u>Elementary</u>	<u>Secondary</u>	<u>Federal</u>	<u>Total</u>
100 <u>Personnel Services – Salaries</u>				
100 Personnel Services – Salaries	1,036,698.60	920,101.04		1,956,799.64
<b>Total Personnel Services – Salaries</b>	<b>\$1,036,698.60</b>	<b>\$920,101.04</b>		<b>\$1,956,799.64</b>
200 <u>Personnel Services – Employee Benefits</u>				
210 Group Insurance – Contracted Provider	384,143.54	312,784.00		696,927.54
220 Social Security Contributions	84,633.37	67,599.62		152,232.99
230 PSERS Retirement Contributions	324,572.42	294,854.07		619,426.49
260 Workers' Compensation	9,002.47	7,615.12		16,617.59
<b>Total Personnel Services – Employee Benefits</b>	<b>\$802,351.80</b>	<b>\$682,852.81</b>		<b>\$1,485,204.61</b>
500 <u>Other Purchased Services</u>				
550 Printing and Binding		1,892.01		1,892.01
580 Travel	62.60	684.02		746.62
<b>Total Other Purchased Services</b>	<b>\$62.60</b>	<b>\$2,576.03</b>		<b>\$2,638.63</b>
600 <u>Supplies</u>				
610 General Supplies	3,060.80	5,542.70		8,603.50
<b>Total Supplies</b>	<b>\$3,060.80</b>	<b>\$5,542.70</b>		<b>\$8,603.50</b>
800 <u>Other Objects</u>				
810 Dues and Fees		3,850.00		3,850.00
<b>Total Other Objects</b>		<b>\$3,850.00</b>		<b>\$3,850.00</b>
<b>Total 2380 Office of the Principal Services</b>	<b>\$1,842,173.80</b>	<b>\$1,614,922.58</b>		<b>\$3,457,096.38</b>

LEA : 118408852     Wilkes-Barre Area SD

Printed 3/5/2019 3:19:48 PM

<b>General Fund (10)</b>				
<b>2400 Support Services – Pupil Health</b>	<b><u>Elementary</u></b>	<b><u>Secondary</u></b>	<b><u>Federal</u></b>	<b><u>Total</u></b>
<b>100 <u>Personnel Services – Salaries</u></b>				
100 Personnel Services – Salaries				808,395.18
<b>Total Personnel Services – Salaries</b>				<b>\$808,395.18</b>
<b>200 <u>Personnel Services – Employee Benefits</u></b>				
210 Group Insurance – Contracted Provider				259,095.81
220 Social Security Contributions				60,506.15
230 PSERS Retirement Contributions				252,387.68
260 Workers' Compensation				6,566.85
<b>Total Personnel Services – Employee Benefits</b>				<b>\$578,556.49</b>
<b>300 <u>Purchased Professional and Technical Services</u></b>				
330 Other Professional Services			193,790.50	433,264.48
<b>Total Purchased Professional and Technical Services</b>			<b>\$193,790.50</b>	<b>\$433,264.48</b>
<b>600 <u>Supplies</u></b>				
610 General Supplies				20,575.35
<b>Total Supplies</b>				<b>\$20,575.35</b>
<b>Total 2400 Support Services – Pupil Health</b>			<b>\$193,790.50</b>	<b>\$1,840,791.50</b>

LEA : 118408852     Wilkes-Barre Area SD

Printed 3/5/2019 3:19:48 PM

General Fund (10)

2420 Medical Services

Elementary                      Secondary                      Federal                      Total

300 Purchased Professional and Technical Services

330 Other Professional Services 27,977.00

**Total Purchased Professional and Technical Services \$27,977.00**

600 Supplies

610 General Supplies 16,204.00

**Total Supplies \$16,204.00**

**Total 2420 Medical Services \$44,181.00**

LEA : 118408852     Wilkes-Barre Area SD

Printed 3/5/2019 3:19:48 PM

General Fund (10)

2430 Dental Services

Elementary                      Secondary                      Federal                      Total

100 <u>Personnel Services – Salaries</u>				
100 Personnel Services – Salaries				72,055.00
Total Personnel Services – Salaries				\$72,055.00
200 <u>Personnel Services – Employee Benefits</u>				
210 Group Insurance – Contracted Provider				27,990.86
220 Social Security Contributions				5,512.07
230 PSERS Retirement Contributions				23,571.61
260 Workers' Compensation				585.31
Total Personnel Services – Employee Benefits				\$57,659.85
600 <u>Supplies</u>				
610 General Supplies				4,371.35
Total Supplies				\$4,371.35
Total 2430 Dental Services				\$134,086.20

LEA : 118408852     Wilkes-Barre Area SD

Printed 3/5/2019 3:19:48 PM

General Fund (10)

2440 Nursing Services

	<u>Elementary</u>	<u>Secondary</u>	<u>Federal</u>	<u>Total</u>
<b>100 <u>Personnel Services – Salaries</u></b>				
100 Personnel Services – Salaries				675,439.56
<b>Total Personnel Services – Salaries</b>				<b>\$675,439.56</b>
<b>200 <u>Personnel Services – Employee Benefits</u></b>				
210 Group Insurance – Contracted Provider				224,281.33
220 Social Security Contributions				50,335.35
230 PSERS Retirement Contributions				207,756.44
260 Workers' Compensation				5,486.74
<b>Total Personnel Services – Employee Benefits</b>				<b>\$487,859.86</b>
<b>300 <u>Purchased Professional and Technical Services</u></b>				
330 Other Professional Services			156,344.63	367,841.61
<b>Total Purchased Professional and Technical Services</b>			<b>\$156,344.63</b>	<b>\$367,841.61</b>
<b>Total 2440 Nursing Services</b>			<b>\$156,344.63</b>	<b>\$1,531,141.03</b>

LEA : 118408852     Wilkes-Barre Area SD

Printed 3/5/2019 3:19:48 PM

General Fund (10)

2450 Nonpublic Health Services	<u>Elementary</u>	<u>Secondary</u>	<u>Federal</u>	<u>Total</u>
100 <u>Personnel Services – Salaries</u>				
100 Personnel Services – Salaries				60,900.62
Total Personnel Services – Salaries				\$60,900.62
200 <u>Personnel Services – Employee Benefits</u>				
210 Group Insurance – Contracted Provider				6,823.62
220 Social Security Contributions				4,658.73
230 PSERS Retirement Contributions				21,059.63
260 Workers' Compensation				494.80
Total Personnel Services – Employee Benefits				\$33,036.78
Total 2450 Nonpublic Health Services				\$93,937.40

LEA : 118408852     Wilkes-Barre Area SD

Printed 3/5/2019 3:19:48 PM

General Fund (10)

2490 Other Health Services

<u>Elementary</u>	<u>Secondary</u>	<u>Federal</u>	<u>Total</u>
-------------------	------------------	----------------	--------------

300 Purchased Professional and Technical Services

330 Other Professional Services		37,445.87	37,445.87
---------------------------------	--	-----------	-----------

<b>Total Purchased Professional and Technical Services</b>		<b>\$37,445.87</b>	<b>\$37,445.87</b>
--	--	--------------------	--------------------

<b>Total 2490 Other Health Services</b>		<b>\$37,445.87</b>	<b>\$37,445.87</b>
---	--	--------------------	--------------------



LEA : 118408852     Wilkes-Barre Area SD

Printed 3/5/2019 3:19:48 PM

General Fund (10)

2500 Support Services – Business	<u>Elementary</u>	<u>Secondary</u>	<u>Federal</u>	<u>Total</u>
<b>100 <u>Personnel Services – Salaries</u></b>				
100 Personnel Services – Salaries				550,675.55
<b>Total Personnel Services – Salaries</b>				<b>\$550,675.55</b>
<b>200 <u>Personnel Services – Employee Benefits</u></b>				
210 Group Insurance – Contracted Provider				171,868.23
220 Social Security Contributions				41,266.83
230 PSERS Retirement Contributions				166,984.43
260 Workers' Compensation				4,452.62
<b>Total Personnel Services – Employee Benefits</b>				<b>\$384,572.11</b>
<b>300 <u>Purchased Professional and Technical Services</u></b>				
340 Technical Services				83,798.94
390 Other Purchased Professional and Technical Services			31,680.90	31,680.90
<b>Total Purchased Professional and Technical Services</b>			<b>\$31,680.90</b>	<b>\$115,479.84</b>
<b>500 <u>Other Purchased Services</u></b>				
530 Communications				29,103.44
580 Travel				6,254.28
599 Other Miscellaneous Purchased Services				97.76
<b>Total Other Purchased Services</b>				<b>\$35,455.48</b>
<b>600 <u>Supplies</u></b>				
610 General Supplies				10,497.81
640 Books and Periodicals				130.00
<b>Total Supplies</b>				<b>\$10,627.81</b>
<b>800 <u>Other Objects</u></b>				
810 Dues and Fees				962.34
890 Miscellaneous Expenditures				3,810.00
<b>Total Other Objects</b>				<b>\$4,772.34</b>
<b>Total 2500 Support Services – Business</b>			<b>\$31,680.90</b>	<b>\$1,101,583.13</b>

LEA : 118408852      Wilkes-Barre Area SD

Printed 3/5/2019 3:19:48 PM

General Fund (10)				
2510 Fiscal Services	<u>Elementary</u>	<u>Secondary</u>	<u>Federal</u>	<u>Total</u>
100 <u>Personnel Services – Salaries</u>				
100 Personnel Services – Salaries				394,909.84
Total Personnel Services – Salaries				\$394,909.84
200 <u>Personnel Services – Employee Benefits</u>				
210 Group Insurance – Contracted Provider				121,748.19
220 Social Security Contributions				29,299.42
230 PSERS Retirement Contributions				117,266.75
260 Workers' Compensation				3,183.29
Total Personnel Services – Employee Benefits				\$271,497.65
300 <u>Purchased Professional and Technical Services</u>				
340 Technical Services				83,798.94
390 Other Purchased Professional and Technical Services			31,680.90	31,680.90
Total Purchased Professional and Technical Services			\$31,680.90	\$115,479.84
500 <u>Other Purchased Services</u>				
580 Travel				5,886.21
599 Other Miscellaneous Purchased Services				97.76
Total Other Purchased Services				\$5,983.97
600 <u>Supplies</u>				
610 General Supplies				7,740.96
640 Books and Periodicals				130.00
Total Supplies				\$7,870.96
800 <u>Other Objects</u>				
810 Dues and Fees				566.34
890 Miscellaneous Expenditures				3,810.00
Total Other Objects				\$4,376.34
Total 2510 Fiscal Services			\$31,680.90	\$800,118.60

LEA : 118408852     Wilkes-Barre Area SD

Printed 3/5/2019 3:19:48 PM

General Fund (10)				
2511 Supervision of Fiscal Services - Head of Component	<u>Elementary</u>	<u>Secondary</u>	<u>Federal</u>	<u>Total</u>
100 <u>Personnel Services – Salaries</u>				
100 Personnel Services – Salaries				160,254.85
Total Personnel Services – Salaries				\$160,254.85
200 <u>Personnel Services – Employee Benefits</u>				
210 Group Insurance – Contracted Provider				46,224.63
220 Social Security Contributions				11,347.90
230 PSERS Retirement Contributions				43,759.12
260 Workers' Compensation				1,300.01
Total Personnel Services – Employee Benefits				\$102,631.66
500 <u>Other Purchased Services</u>				
580 Travel				5,104.79
599 Other Miscellaneous Purchased Services				97.76
Total Other Purchased Services				\$5,202.55
600 <u>Supplies</u>				
640 Books and Periodicals				130.00
Total Supplies				\$130.00
800 <u>Other Objects</u>				
810 Dues and Fees				200.00
Total Other Objects				\$200.00
Total 2511 Supervision of Fiscal Services - Head of Component				\$268,419.06

LEA : 118408852      Wilkes-Barre Area SD

Printed 3/5/2019 3:19:48 PM

<b>General Fund (10)</b>				
<b>2512 Budgeting Services</b>	<b><u>Elementary</u></b>	<b><u>Secondary</u></b>	<b><u>Federal</u></b>	<b><u>Total</u></b>
<b>100 <u>Personnel Services – Salaries</u></b>				
100 Personnel Services – Salaries				89,780.81
<b>Total Personnel Services – Salaries</b>				<b>\$89,780.81</b>
<b>200 <u>Personnel Services – Employee Benefits</u></b>				
210 Group Insurance – Contracted Provider				9,342.60
220 Social Security Contributions				6,868.45
230 PSERS Retirement Contributions				26,403.36
260 Workers' Compensation				711.96
<b>Total Personnel Services – Employee Benefits</b>				<b>\$43,326.37</b>
<b>300 <u>Purchased Professional and Technical Services</u></b>				
340 Technical Services				48,258.96
<b>Total Purchased Professional and Technical Services</b>				<b>\$48,258.96</b>
<b>500 <u>Other Purchased Services</u></b>				
580 Travel				728.99
<b>Total Other Purchased Services</b>				<b>\$728.99</b>
<b>800 <u>Other Objects</u></b>				
810 Dues and Fees				250.00
<b>Total Other Objects</b>				<b>\$250.00</b>
<b>Total 2512 Budgeting Services</b>				<b>\$182,345.13</b>

LEA : 118408852     Wilkes-Barre Area SD

Printed 3/5/2019 3:19:48 PM

General Fund (10)

2513 Receiving and Disbursing Funds Services	<u>Elementary</u>	<u>Secondary</u>	<u>Federal</u>	<u>Total</u>
100 <u>Personnel Services – Salaries</u>				
100 Personnel Services – Salaries				74,052.69
Total Personnel Services – Salaries				\$74,052.69
200 <u>Personnel Services – Employee Benefits</u>				
210 Group Insurance – Contracted Provider				47,905.80
220 Social Security Contributions				5,665.03
230 PSERS Retirement Contributions				24,078.03
260 Workers' Compensation				598.60
Total Personnel Services – Employee Benefits				\$78,247.46
500 <u>Other Purchased Services</u>				
580 Travel				52.43
Total Other Purchased Services				\$52.43
600 <u>Supplies</u>				
610 General Supplies				6,816.04
Total Supplies				\$6,816.04
800 <u>Other Objects</u>				
810 Dues and Fees				116.34
Total Other Objects				\$116.34
Total 2513 Receiving and Disbursing Funds Services				\$159,284.96

LEA : 118408852      Wilkes-Barre Area SD

Printed 3/5/2019 3:19:48 PM

<b>General Fund (10)</b>				
<b>2514 Payroll Services</b>	<u><b>Elementary</b></u>	<u><b>Secondary</b></u>	<u><b>Federal</b></u>	<u><b>Total</b></u>
<b>100 <u>Personnel Services – Salaries</u></b>				
100 Personnel Services – Salaries				70,821.49
<b>Total Personnel Services – Salaries</b>				<b>\$70,821.49</b>
<b>200 <u>Personnel Services – Employee Benefits</u></b>				
210 Group Insurance – Contracted Provider				18,275.16
220 Social Security Contributions				5,418.04
230 PSERS Retirement Contributions				23,026.24
260 Workers' Compensation				572.72
<b>Total Personnel Services – Employee Benefits</b>				<b>\$47,292.16</b>
<b>300 <u>Purchased Professional and Technical Services</u></b>				
340 Technical Services				35,539.98
<b>Total Purchased Professional and Technical Services</b>				<b>\$35,539.98</b>
<b>600 <u>Supplies</u></b>				
610 General Supplies				924.92
<b>Total Supplies</b>				<b>\$924.92</b>
<b>Total 2514 Payroll Services</b>				<b>\$154,578.55</b>

LEA : 118408852     Wilkes-Barre Area SD

Printed 3/5/2019 3:19:48 PM

General Fund (10)

2519 Other Fiscal Services

Elementary                      Secondary                      Federal                      Total

300 Purchased Professional and Technical Services

390 Other Purchased Professional and Technical Services			31,680.90	31,680.90
---	--	--	-----------	-----------

<b>Total Purchased Professional and Technical Services</b>			<b>\$31,680.90</b>	<b>\$31,680.90</b>
--	--	--	--------------------	--------------------

800 Other Objects

890 Miscellaneous Expenditures				3,810.00
--------------------------------	--	--	--	----------

<b>Total Other Objects</b>				<b>\$3,810.00</b>
----------------------------	--	--	--	-------------------

<b>Total 2519 Other Fiscal Services</b>			<b>\$31,680.90</b>	<b>\$35,490.90</b>
---	--	--	--------------------	--------------------

LEA : 118408852     Wilkes-Barre Area SD

Printed 3/5/2019 3:19:48 PM

General Fund (10)

2520 Purchasing Services	<u>Elementary</u>	<u>Secondary</u>	<u>Federal</u>	<u>Total</u>
100 <u>Personnel Services – Salaries</u>				
100 Personnel Services – Salaries				113,400.00
Total Personnel Services – Salaries				\$113,400.00
200 <u>Personnel Services – Employee Benefits</u>				
210 Group Insurance – Contracted Provider				29,876.04
220 Social Security Contributions				8,678.02
230 PSERS Retirement Contributions				36,906.19
260 Workers' Compensation				921.13
Total Personnel Services – Employee Benefits				\$76,381.38
500 <u>Other Purchased Services</u>				
530 Communications				29,103.44
580 Travel				368.07
Total Other Purchased Services				\$29,471.51
800 <u>Other Objects</u>				
810 Dues and Fees				396.00
Total Other Objects				\$396.00
Total 2520 Purchasing Services				\$219,648.89



LEA : 118408852     Wilkes-Barre Area SD

Printed 3/5/2019 3:19:48 PM

General Fund (10)

2540 Printing, Publishing and Duplicating Services

Elementary                      Secondary                      Federal                      Total

100 <u>Personnel Services – Salaries</u>				
100 Personnel Services – Salaries				42,365.71
<b>Total Personnel Services – Salaries</b>				<b>\$42,365.71</b>
200 <u>Personnel Services – Employee Benefits</u>				
210 Group Insurance – Contracted Provider				20,244.00
220 Social Security Contributions				3,289.39
230 PSERS Retirement Contributions				12,811.49
260 Workers' Compensation				348.20
<b>Total Personnel Services – Employee Benefits</b>				<b>\$36,693.08</b>
600 <u>Supplies</u>				
610 General Supplies				2,756.85
<b>Total Supplies</b>				<b>\$2,756.85</b>
<b>Total 2540 Printing, Publishing and Duplicating Services</b>				<b>\$81,815.64</b>

LEA : 118408852      Wilkes-Barre Area SD

Printed 3/5/2019 3:19:48 PM

General Fund (10)				
2600 Operation and Maintenance of Plant Services	<u>Elementary</u>	<u>Secondary</u>	<u>Federal</u>	<u>Total</u>
100 <u>Personnel Services – Salaries</u>				
100 Personnel Services – Salaries			1,299.44	3,978,866.09
Total Personnel Services – Salaries			\$1,299.44	\$3,978,866.09
200 <u>Personnel Services – Employee Benefits</u>				
210 Group Insurance – Contracted Provider				1,439,071.93
220 Social Security Contributions			42.98	312,626.40
230 PSERS Retirement Contributions			182.97	1,285,158.49
260 Workers' Compensation			7.54	33,097.20
Total Personnel Services – Employee Benefits			\$233.49	\$3,069,954.02
300 <u>Purchased Professional and Technical Services</u>				
330 Other Professional Services				21,822.50
390 Other Purchased Professional and Technical Services				6,800.00
Total Purchased Professional and Technical Services				\$28,622.50
400 <u>Purchased Property Services</u>				
410 Cleaning Services				122,323.19
420 Utility Services				860,799.97
430 Repairs and Maintenance Services				604,172.73
440 Rentals				27,907.60
460 Extermination Services				19,869.00
490 Other Purchased Property Services				28,415.39
Total Purchased Property Services				\$1,663,487.88
500 <u>Other Purchased Services</u>				
521 Fire Insurance				158,232.00
523 General Property and Liability Insurance				51,449.88
529 Other Insurance				30,486.50
530 Communications				193,459.43
580 Travel				12,582.81
599 Other Miscellaneous Purchased Services				10,669.00
Total Other Purchased Services				\$456,879.62
600 <u>Supplies</u>				
610 General Supplies	185,276.22	185,276.16		370,552.38
620 Energy				664,772.66
Total Supplies	\$185,276.22	\$185,276.16		\$1,035,325.04
800 <u>Other Objects</u>				
810 Dues and Fees				565.00
Total Other Objects				\$565.00
Total 2600 Operation and Maintenance of Plant Services	\$185,276.22	\$185,276.16	\$1,532.93	\$10,233,700.15

LEA : 118408852     Wilkes-Barre Area SD

Printed 3/5/2019 3:19:48 PM

General Fund (10)

2610 Supervision of Operation and Maintenance of Plant Services	<u>Elementary</u>	<u>Secondary</u>	<u>Federal</u>	<u>Total</u>
100 <u>Personnel Services – Salaries</u>				
100 Personnel Services – Salaries				127,790.38
Total Personnel Services – Salaries				\$127,790.38
200 <u>Personnel Services – Employee Benefits</u>				
210 Group Insurance – Contracted Provider				66,568.68
220 Social Security Contributions				9,777.99
230 PSERS Retirement Contributions				41,578.95
260 Workers' Compensation				1,055.97
Total Personnel Services – Employee Benefits				\$118,981.59
300 <u>Purchased Professional and Technical Services</u>				
330 Other Professional Services				81.00
Total Purchased Professional and Technical Services				\$81.00
500 <u>Other Purchased Services</u>				
530 Communications				189,287.93
580 Travel				36.99
599 Other Miscellaneous Purchased Services				10,669.00
Total Other Purchased Services				\$199,993.92
Total 2610 Supervision of Operation and Maintenance of Plant Services				\$446,846.89

LEA : 118408852      Wilkes-Barre Area SD

Printed 3/5/2019 3:19:48 PM

General Fund (10)				
2611 Supervision of Operation and Maintenance of Plant Services – Head of Component	<u>Elementary</u>	<u>Secondary</u>	<u>Federal</u>	<u>Total</u>
100 <u>Personnel Services – Salaries</u>				
100 Personnel Services – Salaries				127,790.38
Total Personnel Services – Salaries				\$127,790.38
200 <u>Personnel Services – Employee Benefits</u>				
210 Group Insurance – Contracted Provider				66,568.68
220 Social Security Contributions				9,777.99
230 PSERS Retirement Contributions				41,578.95
260 Workers' Compensation				1,055.97
Total Personnel Services – Employee Benefits				\$118,981.59
300 <u>Purchased Professional and Technical Services</u>				
330 Other Professional Services				81.00
Total Purchased Professional and Technical Services				\$81.00
500 <u>Other Purchased Services</u>				
530 Communications				189,287.93
580 Travel				36.99
599 Other Miscellaneous Purchased Services				10,669.00
Total Other Purchased Services				\$199,993.92
Total 2611 Supervision of Operation and Maintenance of Plant Services – Head of Component				\$446,846.89

LEA : 118408852     Wilkes-Barre Area SD

Printed 3/5/2019 3:19:48 PM

General Fund (10)				
2620 Operation of Buildings Services	<u>Elementary</u>	<u>Secondary</u>	<u>Federal</u>	<u>Total</u>
100 <u>Personnel Services – Salaries</u>				
100 Personnel Services – Salaries			1,299.44	3,278,400.76
Total Personnel Services – Salaries			\$1,299.44	\$3,278,400.76
200 <u>Personnel Services – Employee Benefits</u>				
210 Group Insurance – Contracted Provider				1,163,444.61
220 Social Security Contributions			42.98	255,897.83
230 PSERS Retirement Contributions			182.97	1,046,506.50
260 Workers' Compensation			7.54	27,047.67
Total Personnel Services – Employee Benefits			\$233.49	\$2,492,896.61
300 <u>Purchased Professional and Technical Services</u>				
330 Other Professional Services				21,741.50
390 Other Purchased Professional and Technical Services				6,800.00
Total Purchased Professional and Technical Services				\$28,541.50
400 <u>Purchased Property Services</u>				
410 Cleaning Services				122,323.19
420 Utility Services				860,395.78
430 Repairs and Maintenance Services				351,934.80
440 Rentals				3,157.60
460 Extermination Services				19,869.00
Total Purchased Property Services				\$1,357,680.37
500 <u>Other Purchased Services</u>				
521 Fire Insurance				158,232.00
523 General Property and Liability Insurance				51,449.88
529 Other Insurance				30,486.50
530 Communications				4,171.50
580 Travel				11,193.31
Total Other Purchased Services				\$255,533.19
600 <u>Supplies</u>				
610 General Supplies	158,428.98	158,428.94		316,857.92
620 Energy				597,439.91
Total Supplies	\$158,428.98	\$158,428.94		\$914,297.83
800 <u>Other Objects</u>				
810 Dues and Fees				165.00
Total Other Objects				\$165.00
Total 2620 Operation of Buildings Services	\$158,428.98	\$158,428.94	\$1,532.93	\$8,327,515.26

LEA : 118408852     Wilkes-Barre Area SD

Printed 3/5/2019 3:19:48 PM

General Fund (10)				
2630 Care and Upkeep of Grounds Services	<u>Elementary</u>	<u>Secondary</u>	<u>Federal</u>	<u>Total</u>
100 <u>Personnel Services – Salaries</u>				
100 Personnel Services – Salaries				192,276.54
Total Personnel Services – Salaries				\$192,276.54
200 <u>Personnel Services – Employee Benefits</u>				
210 Group Insurance – Contracted Provider				46,454.90
220 Social Security Contributions				14,742.00
230 PSERS Retirement Contributions				62,791.40
260 Workers' Compensation				1,563.83
Total Personnel Services – Employee Benefits				\$125,552.13
400 <u>Purchased Property Services</u>				
420 Utility Services				404.19
430 Repairs and Maintenance Services				13,079.24
Total Purchased Property Services				\$13,483.43
600 <u>Supplies</u>				
610 General Supplies	13,122.28	13,122.26		26,244.54
Total Supplies	\$13,122.28	\$13,122.26		\$26,244.54
Total 2630 Care and Upkeep of Grounds Services	\$13,122.28	\$13,122.26		\$357,556.64

LEA : 118408852     Wilkes-Barre Area SD

Printed 3/5/2019 3:19:48 PM

General Fund (10)

2640 Care and Upkeep of Equipment Services

Elementary

Secondary

Federal

Total

400 Purchased Property Services

430 Repairs and Maintenance Services

221,293.98

440 Rentals 24,750.00

Total Purchased Property Services				\$246,043.98
Total 2640 Care and Upkeep of Equipment Services				\$246,043.98

LEA : 118408852     Wilkes-Barre Area SD

Printed 3/5/2019 3:19:48 PM

General Fund (10)				
2650 Vehicle Operation and Maintenance Services (Other Than Student Transportation Vehicles)	<u>Elementary</u>	<u>Secondary</u>	<u>Federal</u>	<u>Total</u>
400 <u>Purchased Property Services</u>				
430 Repairs and Maintenance Services				17,864.71
Total Purchased Property Services				\$17,864.71
600 <u>Supplies</u>				
610 General Supplies	1,600.74	1,600.74		3,201.48
620 Energy				67,332.75
Total Supplies	\$1,600.74	\$1,600.74		\$70,534.23
Total 2650 Vehicle Operation and Maintenance Services (Other Than Student Transportation Vehicles)	\$1,600.74	\$1,600.74		\$88,398.94



LEA : 118408852     Wilkes-Barre Area SD

Printed 3/5/2019 3:19:48 PM

General Fund (10)				
2660 Safety and Security Services	<u>Elementary</u>	<u>Secondary</u>	<u>Federal</u>	<u>Total</u>
100 <u>Personnel Services – Salaries</u>				
100 Personnel Services – Salaries				380,398.41
Total Personnel Services – Salaries				\$380,398.41
200 <u>Personnel Services – Employee Benefits</u>				
210 Group Insurance – Contracted Provider				162,603.74
220 Social Security Contributions				32,208.58
230 PSERS Retirement Contributions				134,281.64
260 Workers' Compensation				3,429.73
Total Personnel Services – Employee Benefits				\$332,523.69
400 <u>Purchased Property Services</u>				
490 Other Purchased Property Services				28,415.39
Total Purchased Property Services				\$28,415.39
500 <u>Other Purchased Services</u>				
580 Travel				1,352.51
Total Other Purchased Services				\$1,352.51
600 <u>Supplies</u>				
610 General Supplies	12,124.22	12,124.22		24,248.44
Total Supplies	\$12,124.22	\$12,124.22		\$24,248.44
800 <u>Other Objects</u>				
810 Dues and Fees				400.00
Total Other Objects				\$400.00
Total 2660 Safety and Security Services	\$12,124.22	\$12,124.22		\$767,338.44

LEA : 118408852     Wilkes-Barre Area SD

Printed 3/5/2019 3:19:48 PM

General Fund (10)

2700 Student Transportation Services	<u>Elementary</u>	<u>Secondary</u>	<u>Federal</u>	<u>Total</u>
100 <u>Personnel Services – Salaries</u>				
100 Personnel Services – Salaries				29,510.31
Total Personnel Services – Salaries				\$29,510.31
200 <u>Personnel Services – Employee Benefits</u>				
210 Group Insurance – Contracted Provider				43,032.04
220 Social Security Contributions				2,240.63
230 PSERS Retirement Contributions				9,307.86
260 Workers' Compensation				265.89
Total Personnel Services – Employee Benefits				\$54,846.42
500 <u>Other Purchased Services</u>				
513 Contracted Carriers				3,132,766.43
515 Public Carriers				44,924.00
516 Student Transportation Services From the IU				991,965.13
Total Other Purchased Services				\$4,169,655.56
600 <u>Supplies</u>				
620 Energy				157,336.10
Total Supplies				\$157,336.10
Total 2700 Student Transportation Services				\$4,411,348.39

LEA : 118408852     Wilkes-Barre Area SD

Printed 3/5/2019 3:19:48 PM

General Fund (10)				
2720 Vehicle Operation Services	<u>Elementary</u>	<u>Secondary</u>	<u>Federal</u>	<u>Total</u>
100 <u>Personnel Services – Salaries</u>				
100 Personnel Services – Salaries				29,510.31
Total Personnel Services – Salaries				\$29,510.31
200 <u>Personnel Services – Employee Benefits</u>				
210 Group Insurance – Contracted Provider				43,032.04
220 Social Security Contributions				2,240.63
230 PSERS Retirement Contributions				9,307.86
260 Workers' Compensation				265.89
Total Personnel Services – Employee Benefits				\$54,846.42
500 <u>Other Purchased Services</u>				
513 Contracted Carriers				2,203,973.95
515 Public Carriers				42,330.43
516 Student Transportation Services From the IU				986,013.34
Total Other Purchased Services				\$3,232,317.72
Total 2720 Vehicle Operation Services				\$3,316,674.45

LEA : 118408852     Wilkes-Barre Area SD

Printed 3/5/2019 3:19:48 PM

General Fund (10)

2740 Vehicle Servicing and Maintenance Services

Elementary

Secondary

Federal

Total

600 <u>Supplies</u>				
620 Energy				157,336.10
Total Supplies				\$157,336.10
Total 2740 Vehicle Servicing and Maintenance Services				\$157,336.10

LEA : 118408852     Wilkes-Barre Area SD

Printed 3/5/2019 3:19:48 PM

General Fund (10)

2750 Nonpublic Transportation

Elementary                      Secondary                      Federal                      Total

500 Other Purchased Services

513 Contracted Carriers				928,792.48
515 Public Carriers				2,593.57
516 Student Transportation Services From the IU				5,951.79

<b>Total Other Purchased Services</b>				<b>\$937,337.84</b>
<b>Total 2750 Nonpublic Transportation</b>				<b>\$937,337.84</b>

LEA : 118408852      Wilkes-Barre Area SD

Printed 3/5/2019 3:19:48 PM

General Fund (10)				
2800 Support Services – Central	<u>Elementary</u>	<u>Secondary</u>	<u>Federal</u>	<u>Total</u>
<b>100 <u>Personnel Services – Salaries</u></b>				
100 Personnel Services – Salaries			130,535.90	261,679.20
<b>Total Personnel Services – Salaries</b>			<b>\$130,535.90</b>	<b>\$261,679.20</b>
<b>200 <u>Personnel Services – Employee Benefits</u></b>				
210 Group Insurance – Contracted Provider			38,603.64	75,671.28
220 Social Security Contributions			4,993.00	19,597.72
230 PSERS Retirement Contributions			21,257.77	81,145.75
260 Workers' Compensation			874.33	2,140.68
<b>Total Personnel Services – Employee Benefits</b>			<b>\$65,728.74</b>	<b>\$178,555.43</b>
<b>300 <u>Purchased Professional and Technical Services</u></b>				
330 Other Professional Services				26,178.00
390 Other Purchased Professional and Technical Services				3,450.00
<b>Total Purchased Professional and Technical Services</b>				<b>\$29,628.00</b>
<b>500 <u>Other Purchased Services</u></b>				
520 Insurance – General				50.00
580 Travel			172.62	1,413.92
<b>Total Other Purchased Services</b>			<b>\$172.62</b>	<b>\$1,463.92</b>
<b>600 <u>Supplies</u></b>				
610 General Supplies			429.42	3,403.82
<b>Total Supplies</b>			<b>\$429.42</b>	<b>\$3,403.82</b>
<b>800 <u>Other Objects</u></b>				
810 Dues and Fees				189.00
<b>Total Other Objects</b>				<b>\$189.00</b>
<b>Total 2800 Support Services – Central</b>			<b>\$196,866.68</b>	<b>\$474,919.37</b>

LEA : 118408852     Wilkes-Barre Area SD

Printed 3/5/2019 3:19:48 PM

General Fund (10)				
2830 Staff Services	<u>Elementary</u>	<u>Secondary</u>	<u>Federal</u>	<u>Total</u>
100 <u>Personnel Services – Salaries</u>				
100 Personnel Services – Salaries				131,143.30
Total Personnel Services – Salaries				\$131,143.30
200 <u>Personnel Services – Employee Benefits</u>				
210 Group Insurance – Contracted Provider				37,067.64
220 Social Security Contributions				9,604.00
230 PSERS Retirement Contributions				38,655.82
260 Workers' Compensation				1,080.92
Total Personnel Services – Employee Benefits				\$86,408.38
300 <u>Purchased Professional and Technical Services</u>				
330 Other Professional Services				26,178.00
390 Other Purchased Professional and Technical Services				3,450.00
Total Purchased Professional and Technical Services				\$29,628.00
500 <u>Other Purchased Services</u>				
520 Insurance – General				50.00
580 Travel				1,241.30
Total Other Purchased Services				\$1,291.30
600 <u>Supplies</u>				
610 General Supplies				2,974.40
Total Supplies				\$2,974.40
800 <u>Other Objects</u>				
810 Dues and Fees				189.00
Total Other Objects				\$189.00
Total 2830 Staff Services				\$251,634.38

LEA : 118408852     Wilkes-Barre Area SD

Printed 3/5/2019 3:19:48 PM

General Fund (10)				
2832 Recruitment and Placement Services	<u>Elementary</u>	<u>Secondary</u>	<u>Federal</u>	<u>Total</u>
100 <u>Personnel Services – Salaries</u>				
100 Personnel Services – Salaries				131,143.30
Total Personnel Services – Salaries				\$131,143.30
200 <u>Personnel Services – Employee Benefits</u>				
210 Group Insurance – Contracted Provider				37,067.64
220 Social Security Contributions				9,604.00
230 PSERS Retirement Contributions				38,655.82
260 Workers' Compensation				1,080.92
Total Personnel Services – Employee Benefits				\$86,408.38
300 <u>Purchased Professional and Technical Services</u>				
330 Other Professional Services				8,700.00
Total Purchased Professional and Technical Services				\$8,700.00
500 <u>Other Purchased Services</u>				
520 Insurance – General				50.00
580 Travel				1,241.30
Total Other Purchased Services				\$1,291.30
600 <u>Supplies</u>				
610 General Supplies				2,974.40
Total Supplies				\$2,974.40
800 <u>Other Objects</u>				
810 Dues and Fees				189.00
Total Other Objects				\$189.00
Total 2832 Recruitment and Placement Services				\$230,706.38



LEA : 118408852     Wilkes-Barre Area SD

Printed 3/5/2019 3:19:48 PM

General Fund (10)

2834 Staff Development Services – Non-Instructional, Certified Staff Only	<u>Elementary</u>	<u>Secondary</u>	<u>Federal</u>	<u>Total</u>
300 <u>Purchased Professional and Technical Services</u>				
390 Other Purchased Professional and Technical Services				3,450.00
Total Purchased Professional and Technical Services				\$3,450.00
Total 2834 Staff Development Services – Non-Instructional, Certified Staff Only				\$3,450.00

LEA : 118408852     Wilkes-Barre Area SD

Printed 3/5/2019 3:19:48 PM

General Fund (10)				
2835 Health Services	<u>Elementary</u>	<u>Secondary</u>	<u>Federal</u>	<u>Total</u>
300 <u>Purchased Professional and Technical Services</u>				
330 Other Professional Services				17,478.00
<b>Total Purchased Professional and Technical Services</b>				<b>\$17,478.00</b>
<b>Total 2835 Health Services</b>				<b>\$17,478.00</b>

LEA : 118408852     Wilkes-Barre Area SD

Printed 3/5/2019 3:19:48 PM

General Fund (10)				
2850 State and Federal Agency Liaison Services	<u>Elementary</u>	<u>Secondary</u>	<u>Federal</u>	<u>Total</u>
100 <u>Personnel Services – Salaries</u>				
100 Personnel Services – Salaries			130,535.90	130,535.90
Total Personnel Services – Salaries			\$130,535.90	\$130,535.90
200 <u>Personnel Services – Employee Benefits</u>				
210 Group Insurance – Contracted Provider			38,603.64	38,603.64
220 Social Security Contributions			4,993.00	9,993.72
230 PSERS Retirement Contributions			21,257.77	42,489.93
260 Workers' Compensation			874.33	1,059.76
Total Personnel Services – Employee Benefits			\$65,728.74	\$92,147.05
500 <u>Other Purchased Services</u>				
580 Travel			172.62	172.62
Total Other Purchased Services			\$172.62	\$172.62
600 <u>Supplies</u>				
610 General Supplies			429.42	429.42
Total Supplies			\$429.42	\$429.42
Total 2850 State and Federal Agency Liaison Services			\$196,866.68	\$223,284.99

LEA : 118408852     Wilkes-Barre Area SD

Printed 3/5/2019 3:19:48 PM

General Fund (10)				
2900 Other Support Services	<u>Elementary</u>	<u>Secondary</u>	<u>Federal</u>	<u>Total</u>
500 <u>Other Purchased Services</u>				
595 IU Payments By Withholding				125,559.38
Total Other Purchased Services				\$125,559.38
Total 2900 Other Support Services				\$125,559.38

LEA : 118408852     Wilkes-Barre Area SD

Printed 3/5/2019 3:19:48 PM

General Fund (10)

2910 Support Services Not Listed Elsewhere In the 2000 Series

Elementary                      Secondary                      Federal                      Total

500 <u>Other Purchased Services</u>				
595 IU Payments By Withholding				125,559.38
Total Other Purchased Services				\$125,559.38
Total 2910 Support Services Not Listed Elsewhere In the 2000 Series				\$125,559.38

LEA : 118408852      Wilkes-Barre Area SD

Printed 3/5/2019 3:19:54 PM

<b>General Fund (10)</b>	
<b>3000 Operation of Non-Instructional Services</b>	<b><u>Total</u></b>
<b>100 <u>Personnel Services – Salaries</u></b>	
100 Personnel Services – Salaries	1,120,738.28
<b>Total Personnel Services – Salaries</b>	<b>\$1,120,738.28</b>
<b>200 <u>Personnel Services – Employee Benefits</u></b>	
210 Group Insurance – Contracted Provider	1,278.70
220 Social Security Contributions	86,304.19
230 PSERS Retirement Contributions	244,237.08
260 Workers' Compensation	9,105.23
<b>Total Personnel Services – Employee Benefits</b>	<b>\$340,925.20</b>
<b>300 <u>Purchased Professional and Technical Services</u></b>	
330 Other Professional Services	121,204.91
390 Other Purchased Professional and Technical Services	146,841.31
<b>Total Purchased Professional and Technical Services</b>	<b>\$268,046.22</b>
<b>400 <u>Purchased Property Services</u></b>	
410 Cleaning Services	706.00
420 Utility Services	6,027.94
430 Repairs and Maintenance Services	36,789.47
440 Rentals	11,719.85
<b>Total Purchased Property Services</b>	<b>\$55,243.26</b>
<b>500 <u>Other Purchased Services</u></b>	
510 Student Transportation Services	183,152.53
520 Insurance – General	51,870.00
580 Travel	33,188.60
599 Other Miscellaneous Purchased Services	1,258.00
<b>Total Other Purchased Services</b>	<b>\$269,469.13</b>
<b>600 <u>Supplies</u></b>	
610 General Supplies	120,349.96
<b>Total Supplies</b>	<b>\$120,349.96</b>
<b>800 <u>Other Objects</u></b>	
810 Dues and Fees	31,536.72
890 Miscellaneous Expenditures	62,541.00
<b>Total Other Objects</b>	<b>\$94,077.72</b>
<b>Total 3000 Operation of Non-Instructional Services</b>	<b>\$2,268,849.77</b>

LEA : 118408852     Wilkes-Barre Area SD

Printed 3/5/2019 3:19:54 PM

<b>General Fund (10)</b>				
<b>3200 Student Activities</b>	<u>Elementary</u>	<u>Secondary</u>	<u>Federal</u>	<u>Total</u>
<b>100 <u>Personnel Services – Salaries</u></b>				
100 Personnel Services – Salaries			280.00	813,352.62
<b>Total Personnel Services – Salaries</b>			<b>\$280.00</b>	<b>\$813,352.62</b>
<b>200 <u>Personnel Services – Employee Benefits</u></b>				
210 Group Insurance – Contracted Provider				1,262.70
220 Social Security Contributions			10.71	62,633.11
230 PSERS Retirement Contributions			45.16	240,748.76
260 Workers' Compensation			1.88	6,606.62
<b>Total Personnel Services – Employee Benefits</b>			<b>\$57.75</b>	<b>\$311,251.19</b>
<b>300 <u>Purchased Professional and Technical Services</u></b>				
330 Other Professional Services				121,204.91
390 Other Purchased Professional and Technical Services				146,841.31
<b>Total Purchased Professional and Technical Services</b>				<b>\$268,046.22</b>
<b>400 <u>Purchased Property Services</u></b>				
410 Cleaning Services				706.00
420 Utility Services				6,027.94
430 Repairs and Maintenance Services				36,789.47
440 Rentals				11,719.85
<b>Total Purchased Property Services</b>				<b>\$55,243.26</b>
<b>500 <u>Other Purchased Services</u></b>				
510 Student Transportation Services				183,152.53
520 Insurance – General				51,870.00
580 Travel				33,188.60
599 Other Miscellaneous Purchased Services				1,258.00
<b>Total Other Purchased Services</b>				<b>\$269,469.13</b>
<b>600 <u>Supplies</u></b>				
610 General Supplies				112,762.29
<b>Total Supplies</b>				<b>\$112,762.29</b>
<b>800 <u>Other Objects</u></b>				
810 Dues and Fees				31,536.72
<b>Total Other Objects</b>				<b>\$31,536.72</b>
<b>Total 3200 Student Activities</b>			<b>\$337.75</b>	<b>\$1,861,661.43</b>

LEA : 118408852     Wilkes-Barre Area SD

Printed 3/5/2019 3:19:54 PM

General Fund (10)

3300 Community Services	<u>Elementary</u>	<u>Secondary</u>	<u>Federal</u>	<u>Total</u>
100 <u>Personnel Services – Salaries</u>				
100 Personnel Services – Salaries				307,385.66
Total Personnel Services – Salaries				\$307,385.66
200 <u>Personnel Services – Employee Benefits</u>				
210 Group Insurance – Contracted Provider				16.00
220 Social Security Contributions				23,671.08
230 PSERS Retirement Contributions				3,488.32
260 Workers' Compensation				2,498.61
Total Personnel Services – Employee Benefits				\$29,674.01
600 <u>Supplies</u>				
610 General Supplies			6,903.22	7,587.67
Total Supplies			\$6,903.22	\$7,587.67
800 <u>Other Objects</u>				
890 Miscellaneous Expenditures				62,541.00
Total Other Objects				\$62,541.00
Total 3300 Community Services			\$6,903.22	\$407,188.34



LEA : 118408852     Wilkes-Barre Area SD

Printed 3/5/2019 3:19:56 PM

General Fund (10)

5000 Other Expenditures and Financing Uses

Total

800 <u>Other Objects</u>	
880 Refunds of Prior Years' Receipts	439,809.31
<b>Total Other Objects</b>	<b>\$439,809.31</b>
900 <u>Other Uses of Funds</u>	
930 Fund Transfers	2,371,940.34
932 Capital Reserve Fund Transfers Applicable To Fund 32	1,750,000.00
939 Other Fund Transfers	4,932,119.45
<b>Total Other Uses of Funds</b>	<b>\$9,054,059.79</b>
<b>Total 5000 Other Expenditures and Financing Uses</b>	<b>\$9,493,869.10</b>

LEA : 118408852     Wilkes-Barre Area SD

Printed 3/5/2019 3:19:56 PM

General Fund (10)

5100 Debt Service / Other Expenditures and Financing Uses	<u>Elementary</u>	<u>Secondary</u>	<u>Federal</u>	<u>Total</u>
800 <u>Other Objects</u>				
880 Refunds of Prior Years' Receipts				439,809.31
Total Other Objects				\$439,809.31
Total 5100 Debt Service / Other Expenditures and Financing Uses				\$439,809.31

LEA : 118408852     Wilkes-Barre Area SD

Printed 3/5/2019 3:19:56 PM

General Fund (10)

5130 Refund of Prior Year Revenues / Receipts	<u>Elementary</u>	<u>Secondary</u>	<u>Federal</u>	<u>Total</u>
800 <u>Other Objects</u>				
880 Refunds of Prior Years' Receipts				439,809.31
Total Other Objects				\$439,809.31
Total 5130 Refund of Prior Year Revenues / Receipts				\$439,809.31

LEA : 118408852     Wilkes-Barre Area SD

Printed 3/5/2019 3:19:56 PM

General Fund (10)

5200 Interfund Transfers – Out

Elementary                      Secondary                      Federal                      Total

900 Other Uses of Funds

930 Fund Transfers				2,371,940.34
932 Capital Reserve Fund Transfers Applicable To Fund 32				1,750,000.00
939 Other Fund Transfers				4,932,119.45

<b>Total Other Uses of Funds</b>				<b>\$9,054,059.79</b>
<b>Total 5200 Interfund Transfers – Out</b>				<b>\$9,054,059.79</b>

<u>Elementary</u>	<u>Secondary</u>	<u>Federal</u>	<u>Total</u>
-------------------	------------------	----------------	--------------

<u>Elementary</u>	<u>Secondary</u>	<u>Federal</u>	<u>Total</u>
-------------------	------------------	----------------	--------------

<u>Elementary</u>	<u>Secondary</u>	<u>Federal</u>	<u>Total</u>
-------------------	------------------	----------------	--------------

1,750,000.00

4,932,119.45

**\$6,682,119.45**

\$6,682,119.45

LEA : 118408852     Wilkes-Barre Area SD

Printed 3/5/2019 3:19:56 PM

General Fund (10)

5240 Debt Service Fund Transfers	<u>Elementary</u>	<u>Secondary</u>	<u>Federal</u>	<u>Total</u>
900 <u>Other Uses of Funds</u>				
930 Fund Transfers				2,254,234.91
Total Other Uses of Funds				\$2,254,234.91
Total 5240 Debt Service Fund Transfers				\$2,254,234.91

LEA : 118408852     Wilkes-Barre Area SD

Printed 3/5/2019 3:19:56 PM

General Fund (10)

5270 Trust and Agency Fund Transfers	<u>Elementary</u>	<u>Secondary</u>	<u>Federal</u>	<u>Total</u>
900 <u>Other Uses of Funds</u>				
930 Fund Transfers				90,205.43
Total Other Uses of Funds				\$90,205.43
Total 5270 Trust and Agency Fund Transfers				\$90,205.43

LEA : 118408852     Wilkes-Barre Area SD

Printed 3/5/2019 3:19:56 PM

General Fund (10)

5280 Activity Fund Transfers	<u>Elementary</u>	<u>Secondary</u>	<u>Federal</u>	<u>Total</u>
900 <u>Other Uses of Funds</u>				
930 Fund Transfers				27,500.00
Total Other Uses of Funds				\$27,500.00
Total 5280 Activity Fund Transfers				\$27,500.00



LEA : 118408852     Wilkes-Barre Area SD

Printed 3/5/2019 3:19:55 PM

Other Capital Projects Fund (39)

4000 Facilities Acquisition, Construction and Improvement Services

Total

400 Purchased Property Services

430 Repairs and Maintenance Services	878,697.79
450 Construction Services	1,541,752.90

<b>Total Purchased Property Services</b>	<b>\$2,420,450.69</b>
--	-----------------------

700 Property

710 Land and Improvements	219,824.10
---------------------------	------------

<b>Total Property</b>	<b>\$219,824.10</b>
-----------------------	---------------------

<b>Total 4000 Facilities Acquisition, Construction and Improvement Services</b>	<b>\$2,640,274.79</b>
---	-----------------------

LEA : 118408852     Wilkes-Barre Area SD

Printed 3/5/2019 3:19:55 PM

Other Capital Projects Fund (39)

4100 Site Acquisition Services – Original and Additional

Elementary                      Secondary                      Federal                      Total

400 Purchased Property Services

430 Repairs and Maintenance Services 878,697.79

450 Construction Services 1,541,752.90

**Total Purchased Property Services \$2,420,450.69**

700 Property

710 Land and Improvements 219,824.10

**Total Property \$219,824.10**

**Total 4100 Site Acquisition Services – Original and Additional \$2,640,274.79**

LEA : 118408852     Wilkes-Barre Area SD

Printed 3/5/2019 3:19:58 PM

Other Capital Projects Fund (39)

5000 Other Expenditures and Financing Uses

Total

900 Other Uses of Funds

930 Fund Transfers

4,932,119.45

Total Other Uses of Funds	\$4,932,119.45
Total 5000 Other Expenditures and Financing Uses	\$4,932,119.45

Page 124

LEA : 118408852     Wilkes-Barre Area SD

Printed 3/5/2019 3:19:58 PM

Other Capital Projects Fund (39)

5210 General Fund Transfers

Elementary                      Secondary                      Federal                      Total

900 Other Uses of Funds

930 Fund Transfers 4,932,119.45

**Total Other Uses of Funds \$4,932,119.45**

**Total 5210 General Fund Transfers \$4,932,119.45**

LEA : 118408852     Wilkes-Barre Area SD

Printed 3/5/2019 3:19:53 PM

Debt Service Fund (40)

2000 Support Services

800 Other Objects

810 Dues and Fees	780.00
Total Other Objects	\$780.00
Total 2000 Support Services	\$780.00

LEA : 118408852     Wilkes-Barre Area SD

Printed 3/5/2019 3:19:53 PM

Debt Service Fund (40)				
2300 Support Services – Administration	<u>Elementary</u>	<u>Secondary</u>	<u>Federal</u>	<u>Total</u>
800 <u>Other Objects</u>				
810 Dues and Fees				780.00
Total Other Objects				\$780.00
Total 2300 Support Services – Administration				\$780.00

LEA : 118408852     Wilkes-Barre Area SD

Printed 3/5/2019 3:19:53 PM

Debt Service Fund (40)				
2310 Board Services	<u>Elementary</u>	<u>Secondary</u>	<u>Federal</u>	<u>Total</u>
800 <u>Other Objects</u>				
810 Dues and Fees				780.00
Total Other Objects				\$780.00
Total 2310 Board Services				\$780.00



LEA : 118408852     Wilkes-Barre Area SD

Printed 3/5/2019 3:19:59 PM

Debt Service Fund (40)

5000 Other Expenditures and Financing Uses

Total

800 <u>Other Objects</u>	
830 Interest	2,218,704.91
<b>Total Other Objects</b>	<b>\$2,218,704.91</b>
900 <u>Other Uses of Funds</u>	
910 Redemption of Principal	2,880,000.00
939 Other Fund Transfers	317,650.00
<b>Total Other Uses of Funds</b>	<b>\$3,197,650.00</b>
<b>Total 5000 Other Expenditures and Financing Uses</b>	<b>\$5,416,354.91</b>

LEA : 118408852     Wilkes-Barre Area SD

Printed 3/5/2019 3:19:59 PM

Debt Service Fund (40)

5100 Debt Service / Other Expenditures and Financing Uses	<u>Elementary</u>	<u>Secondary</u>	<u>Federal</u>	<u>Total</u>
800 <u>Other Objects</u>				
830 Interest				2,218,704.91
Total Other Objects				\$2,218,704.91
900 <u>Other Uses of Funds</u>				
910 Redemption of Principal				2,880,000.00
Total Other Uses of Funds				\$2,880,000.00
Total 5100 Debt Service / Other Expenditures and Financing Uses				\$5,098,704.91

LEA : 118408852     Wilkes-Barre Area SD

Printed 3/5/2019 3:19:59 PM

Debt Service Fund (40)

5110 Debt Service	<u>Elementary</u>	<u>Secondary</u>	<u>Federal</u>	<u>Total</u>
800 <u>Other Objects</u>				
830 Interest				2,218,704.91
Total Other Objects				\$2,218,704.91
900 <u>Other Uses of Funds</u>				
910 Redemption of Principal				2,880,000.00
Total Other Uses of Funds				\$2,880,000.00
Total 5110 Debt Service				\$5,098,704.91

<u>Elementary</u>	<u>Secondary</u>	<u>Federal</u>	<u>Total</u>
-------------------	------------------	----------------	--------------

[illegible]

317,650.00

**\$317,650.00**

**\$317,650.00**

Page 133

LEA : 118408852     Wilkes-Barre Area SD

Printed 3/5/2019 3:20:01 PM

	<u>General Fund(10)</u>	<u>Public Purpose Trust(27)</u>	<u>Other Compt Approved (28)</u>	<u>Athletic / Activity(29)</u>	<u>Capital Reserve (690. 1850)(31)</u>
<b>1000 <u>Instruction</u></b>					
1100 Regular Programs - Elementary / Secondary	55,356,963.75				
1200 Special Programs - Elementary / Secondary	20,519,097.39				
1300 Vocational Education	3,475,453.52				
1400 Other Instructional Programs - Elementary / Secondary	1,999,980.46				
<b>Total Instruction</b>	<b>\$81,351,495.12</b>				
<b>2000 <u>Support Services</u></b>					
2100 Support Services - Students	3,156,451.14				
2200 Support Services - Instructional Staff	2,599,257.03				
2300 Support Services - Administration	4,833,108.36				
2400 Support Services - Pupil Health	1,840,791.50				
2500 Support Services - Business	1,101,583.13				
2600 Operation and Maintenance of Plant Services	10,233,700.15				
2700 Student Transportation Services	4,411,348.39				
2800 Support Services - Central	474,919.37				
2900 Other Support Services	125,559.38				
<b>Total Support Services</b>	<b>\$28,776,718.45</b>				
<b>3000 <u>Operation of Non-Instructional Services</u></b>					
3200 Student Activities	1,861,661.43				
3300 Community Services	407,188.34				
<b>Total Operation of Non-Instructional Services</b>	<b>\$2,268,849.77</b>				
<b>4000 <u>Facilities Acquisition, Construction and Improvement Services</u></b>					
4100 Site Acquisition Services - Original and Additional					
<b>Total Facilities Acquisition, Construction and Improvement Services</b>					
<b>5000 <u>Other Expenditures and Financing Uses</u></b>					
5100 Debt Service / Other Expenditures and Financing Uses	439,809.31				
5200 Interfund Transfers - Out	9,054,059.79				
<b>Total Other Expenditures and Financing Uses</b>	<b>\$9,493,869.10</b>				
<b>TOTAL ACTUAL EXPENDITURES &amp; OTHER FINANCING USES</b>	<b>\$121,890,932.44</b>				

LEA : 118408852     Wilkes-Barre Area SD

Printed 3/5/2019 3:20:01 PM

	<u>Capital Reserve (1431)(32)</u>	<u>Other Capital Projects Fund(39)</u>	<u>Debt Service(40)</u>	<u>Permanent(90)</u>	<u>Total</u>
<b>1000 <u>Instruction</u></b>					
1100 Regular Programs - Elementary / Secondary					55,356,963.75
1200 Special Programs - Elementary / Secondary					20,519,097.39
1300 Vocational Education					3,475,453.52
1400 Other Instructional Programs - Elementary / Secondary					1,999,980.46
<b>Total Instruction</b>					<b>\$81,351,495.12</b>
<b>2000 <u>Support Services</u></b>					
2100 Support Services - Students					3,156,451.14
2200 Support Services - Instructional Staff					2,599,257.03
2300 Support Services - Administration			780.00		4,833,888.36
2400 Support Services - Pupil Health					1,840,791.50
2500 Support Services - Business					1,101,583.13
2600 Operation and Maintenance of Plant Services					10,233,700.15
2700 Student Transportation Services					4,411,348.39
2800 Support Services - Central					474,919.37
2900 Other Support Services					125,559.38
<b>Total Support Services</b>			<b>\$780.00</b>		<b>\$28,777,498.45</b>
<b>3000 <u>Operation of Non-Instructional Services</u></b>					
3200 Student Activities					1,861,661.43
3300 Community Services					407,188.34
<b>Total Operation of Non-Instructional Services</b>					<b>\$2,268,849.77</b>
<b>4000 <u>Facilities Acquisition, Construction and Improvement Services</u></b>					
4100 Site Acquisition Services - Original and Additional		2,640,274.79			2,640,274.79
<b>Total Facilities Acquisition, Construction and Improvement Services</b>		<b>\$2,640,274.79</b>			<b>\$2,640,274.79</b>
<b>5000 <u>Other Expenditures and Financing Uses</u></b>					
5100 Debt Service / Other Expenditures and Financing Uses			5,098,704.91		5,538,514.22
5200 Interfund Transfers - Out		4,932,119.45	317,650.00		14,303,829.24
<b>Total Other Expenditures and Financing Uses</b>		<b>\$4,932,119.45</b>	<b>\$5,416,354.91</b>		<b>\$19,842,343.46</b>
<b>TOTAL ACTUAL EXPENDITURES &amp; OTHER FINANCING USES</b>		<b>\$7,572,394.24</b>	<b>\$5,417,134.91</b>		<b>\$134,880,461.59</b>

LEA : 118408852     Wilkes-Barre Area SD

Printed 3/5/2019 3:20:06 PM

PSERS Salary Data (Salary Data should relate to the General Fund only)

Amount	Description	Amount
	Total Salary Base for salaries subject to PSERS withholding	45,154,855.26
	Total Federally Funded salaries subject to PSERS withholding	3,439,290.71

Title I Expenditure Data

Amount	Description	Amount
	Expenditures Funded with Current Title I Funds	3,135,781.88
	Expenditures Funded with Carry over Title I Funds	252,449.35
Total Title I Expenditure Data		\$3,388,231.23



Benefits for Staff Relative to Collective Bargaining Agreements

	OBJECT	COVERED	NOT COVERED	TOTAL
10 General Fund				
	211 Medical Insurance			
	212 Dental Insurance			
	215 Eye Care Insurance			
	216 Prescription Insurance			
	271 Self-Insurance Medical Benefits	12,547,058.92		12,547,058.92
	272 Self-Insurance Dental Benefits	524,104.97		524,104.97
	275 Self-Insurance Eye Care Benefits	58,479.73		58,479.73
	276 Self-Insurance Prescription Benefits			
	FUND TOTAL	\$13,129,643.62		\$13,129,643.62
50 Enterprise Fund				
	211 Medical Insurance			
	212 Dental Insurance			
	215 Eye Care Insurance			
	216 Prescription Insurance			
	271 Self-Insurance Medical Benefits	89,747.06		89,747.06
	272 Self-Insurance Dental Benefits	5,193.82		5,193.82
	275 Self-Insurance Eye Care Benefits	581.76		581.76
	276 Self-Insurance Prescription Benefits			
	FUND TOTAL	\$95,522.64		\$95,522.64
60 Internal Service Fund	No Self Insurance data to report			
	211 Medical Insurance			
	212 Dental Insurance			
	215 Eye Care Insurance			
	216 Prescription Insurance			
	271 Self-Insurance Medical Benefits			
	272 Self-Insurance Dental Benefits			
	275 Self-Insurance Eye Care Benefits			
	276 Self-Insurance Prescription Benefits			
	FUND TOTAL			
Total of All Funds		\$13,225,166.26		\$13,225,166.26

LEA : 118408852     Wilkes-Barre Area SD

Printed 3/5/2019 3:20:08 PM

Function	Special Education (Prior Year)	Nonspecial Education (Prior Year)	Total (Prior Year)	Special Education (Current Year)	Nonspecial Education (Current Year)	Total (Current Year)
2120 Guidance Services		1,701,113.51	1,701,113.51		1,681,476.58	1,681,476.58
2140 Psychological Services		540,853.22	540,853.22		498,678.19	498,678.19
2150 Speech Pathology and Audiology Services						
2160 Social Work Services						
2260 Instruction and Curriculum Development Services		1,505,595.33	1,505,595.33		1,265,513.40	1,265,513.40
2350 Legal and Accounting Services	46,608.69	220,271.72	266,880.41	46,424.50	231,534.34	277,958.84
2420 Medical Services		43,749.83	43,749.83		44,181.00	44,181.00
2440 Nursing Services	566,647.45	990,485.55	1,557,133.00	557,394.11	973,746.92	1,531,141.03
2700 Student Transportation Services	755,201.17	3,500,409.62	4,255,610.79	991,965.13	3,419,383.26	4,411,348.39
Total	\$1,368,457.31	\$8,502,478.78	\$9,870,936.09	\$1,595,783.74	\$8,114,513.69	\$9,710,297.43

LEA : 118408852     Wilkes-Barre Area SD

Printed 3/5/2019 3:20:10 PM

(PRINCIPAL AMOUNTS ONLY)								
<u>GOVERNMENTAL FUNDS/ ACTIVITIES</u>	Short-Term Borrowing	General Obligation Bonds/Notes	Authority Building Obligations	Other Long-Term Debt	Other Post- Employment Benefits (OPEB)	Compensated Absences	Net Pension Liability	Total
1. Debt at Beginning of Fiscal Year		49,675,000.00			35,252,995.00	1,810,899.82	237,272,000.00	324,010,894.82
2. Additional Debt Incurred During Year					3,148,223.00	54,975.23		3,203,198.23
3. Retirements and Repayments		2,880,000.00			1,504,727.00		57,795,000.00	62,179,727.00
4. Debt at End of Fiscal Year		46,795,000.00			36,896,491.00	1,865,875.05	179,477,000.00	265,034,366.05
5. Accreted Interest at End Of Fiscal Year								
6. Total Debt and Accreted Interest		46,795,000.00			36,896,491.00	1,865,875.05	179,477,000.00	265,034,366.05
7. Current Portion P&I - Due within 1 year		5,089,066.11			1,484,000.00			6,573,066.11
8. Interest Paid during current fiscal year		2,218,704.91						2,218,704.91

(PRINCIPAL AMOUNTS ONLY)							
<u>PROPRIETARY FUNDS</u>							
1. Debt at Beginning of Fiscal Year							
2. Additional Debt Incurred During Year							
3. Retirements and Repayments							
4. Debt at End of Fiscal Year							
5. Accreted Interest at End Of Fiscal Year							
6. Total Debt and Accreted Interest							
7. Current Portion P&I - Due within 1 year							
8. Interest Paid during current fiscal year							

LEA : 118408852     Wilkes-Barre Area SD

Printed 3/5/2019 3:20:10 PM

Total Principal and Interest Payments Made by Your School - All Funds

Function	Fund		Principal (910)	Principal (920)	Interest (830)	Total (Principal +Interest)	Misc Other Uses (990)
5110	10	General Fund					
5110	20	Special Revenue Funds					
5110	30	Capital Projects Funds					
5110	40	Debt Service Fund	2,880,000.00		2,218,704.91	5,098,704.91	
5110	90	Permanent Fund					
5120	10	General Fund					
5120	20	Special Revenue Funds					
5120	30	Capital Projects Funds					
5120	40	Debt Service Fund					
Total Debt Payments - Governmental Funds			\$2,880,000.00		\$2,218,704.91	\$5,098,704.91	

Function	Fund		Principal (910)	Principal (920)	Interest (830)	Total (Principal +Interest)
5110	50	Enterprise Fund				
5110	60	Internal Service Fund				
5120	50	Enterprise Fund				
5120	60	Internal Service Fund				
Total Debt Payments - Proprietary Funds						

LEA : 118408852     Wilkes-Barre Area SD

Printed 3/5/2019 3:20:10 PM

**Debt Details**  
**Governmental Funds/ Activities**

Debt Category	Debt Issue Date (MM/YYYY)	Principal Amounts Only				Current Portion Due Within One Year (Principal and Interest)	Interest Paid During Fiscal Year
		Debt at Beginning of Fiscal Year	Additions	Reductions / Repayments	Debt at End of Fiscal Year		
General Obligation Bonds/Notes – CIB	12/2016	7,670,000.00		10,000.00	7,660,000.00	361,922.35	352,253.65
General Obligation Bonds/Notes – CIB	12/2016	27,410,000.00		5,000.00	27,405,000.00	1,220,143.76	1,215,293.76
General Obligation Bonds/Notes – CIB	01/2015	14,260,000.00		2,530,000.00	11,730,000.00	3,507,000.00	632,900.00
General Obligation Bonds/Notes – CIB	12/2003	335,000.00		335,000.00			18,257.50
Compensated Absences		1,810,899.82	54,975.23		1,865,875.05		
Other Post-Employment Benefits (OPEB)		35,252,995.00	3,148,223.00	1,504,727.00	36,896,491.00	1,484,000.00	
Net Pension Liability		237,272,000.00		57,795,000.00	179,477,000.00		
<b>Totals for Debt Entered:</b>		<b>\$324,010,894.82</b>	<b>\$3,203,198.23</b>	<b>\$62,179,727.00</b>	<b>\$265,034,366.05</b>	<b>\$6,573,066.11</b>	<b>\$2,218,704.91</b>

LEA : 118408852     Wilkes-Barre Area SD

Printed 3/5/2019 3:20:11 PM

General Fund (10)

Section 1: Tuition/Purchased Services as Reported within Expenditure Detail	Amount
Tuition Reported in General Fund Expenditures 1000-560	14,552,212.54
Purchased Services in General Fund Expenditures 1000-594 and 1000-597	1,079,804.80
<b>Section 1 Total</b>	<b>\$15,632,017.34</b>

Section 2: Tuition Paid to Institution Types During Fiscal Year	Tuition Paid For Nonspecial Education	Tuition Paid For Special Education	Total
1    1306 Institutions	185,602.81	295,857.20	481,460.01
2    Institutionalized Children's Programs			
3    Juveniles Incarcerated in Adult Facilities	46,745.56		46,745.56
4    Residential Treatment Facilities	124,209.04	65,760.00	189,969.04
5    Other Local Education Agencies		34,907.54	34,907.54
6    Brick and Mortar Charter Schools	3,856,032.61	1,681,710.58	5,537,743.19
7    Cyber Charter Schools	2,311,989.01	942,407.39	3,254,396.40
8    Career and Technology Centers	2,869,323.95		2,869,323.95
9    Approved Private Schools		91,681.10	91,681.10
10   PA Chartered Schools for the Deaf and Blind			
11   Private Residential Rehabilitative Institutions		104,499.88	104,499.88
12   Juvenile Detention Centers		1,608,508.64	1,608,508.64
13   Special Program Jointures	347,305.00	1,065,477.03	1,412,782.03
14   Other Tuition Not Included Elsewhere In This Section			
<b>Section 2 Total</b>	<b>\$9,741,207.98</b>	<b>\$5,890,809.36</b>	<b>\$15,632,017.34</b>

LEA : 118408852     Wilkes-Barre Area SD

Printed 3/5/2019 3:20:15 PM

Food Service / Cafeteria Operations Fund (51)

<b>3000 Operation of Non-Instructional Services</b>	<b><u>Total</u></b>
<b>100 <u>Personnel Services – Salaries</u></b>	
100 Personnel Services – Salaries	191,978.00
<b>Total Personnel Services – Salaries</b>	<b>\$191,978.00</b>
<b>200 <u>Personnel Services – Employee Benefits</u></b>	
210 Group Insurance – Contracted Provider	96,452.88
220 Social Security Contributions	14,640.78
230 PSERS Retirement Contributions	62,137.23
260 Workers' Compensation	1,276.11
280 Other Post-Employment Benefits (OPEB)	24,324.00
<b>Total Personnel Services – Employee Benefits</b>	<b>\$198,831.00</b>
<b>300 <u>Purchased Professional and Technical Services</u></b>	
330 Other Professional Services	3,600.00
<b>Total Purchased Professional and Technical Services</b>	<b>\$3,600.00</b>
<b>400 <u>Purchased Property Services</u></b>	
430 Repairs and Maintenance Services	77,450.00
<b>Total Purchased Property Services</b>	<b>\$77,450.00</b>
<b>500 <u>Other Purchased Services</u></b>	
520 Insurance – General	2,940.00
540 Advertising	392.50
580 Travel	96.77
591 Services Purchased Locally	1,321,146.66
599 Other Miscellaneous Purchased Services	6,048.07
<b>Total Other Purchased Services</b>	<b>\$1,330,624.00</b>
<b>600 <u>Supplies</u></b>	
610 General Supplies	254,409.31
620 Energy	4,057.07
630 Food	1,800,932.62
<b>Total Supplies</b>	<b>\$2,059,399.00</b>
<b>700 <u>Property</u></b>	
740 Depreciation	64,387.00
<b>Total Property</b>	<b>\$64,387.00</b>
<b>800 <u>Other Objects</u></b>	
890 Miscellaneous Expenditures	76,354.00
<b>Total Other Objects</b>	<b>\$76,354.00</b>
<b>Total 3000 Operation of Non-Instructional Services</b>	<b>\$4,002,623.00</b>

LEA : 118408852      Wilkes-Barre Area SD

Printed 3/5/2019 3:20:15 PM

Food Service / Cafeteria Operations Fund (51)

3100 Food Services	<u>Elementary</u>	<u>Secondary</u>	<u>Federal</u>	<u>Total</u>
100 <u>Personnel Services – Salaries</u>				
100 Personnel Services – Salaries				191,978.00
<b>Total Personnel Services – Salaries</b>				<b>\$191,978.00</b>
200 <u>Personnel Services – Employee Benefits</u>				
210 Group Insurance – Contracted Provider				96,452.88
220 Social Security Contributions				14,640.78
230 PSERS Retirement Contributions				62,137.23
260 Workers' Compensation				1,276.11
280 Other Post-Employment Benefits (OPEB)				24,324.00
<b>Total Personnel Services – Employee Benefits</b>				<b>\$198,831.00</b>
300 <u>Purchased Professional and Technical Services</u>				
330 Other Professional Services				3,600.00
<b>Total Purchased Professional and Technical Services</b>				<b>\$3,600.00</b>
400 <u>Purchased Property Services</u>				
430 Repairs and Maintenance Services				77,450.00
<b>Total Purchased Property Services</b>				<b>\$77,450.00</b>
500 <u>Other Purchased Services</u>				
520 Insurance – General				2,940.00
540 Advertising				392.50
580 Travel				96.77
591 Services Purchased Locally				1,321,146.66
599 Other Miscellaneous Purchased Services				6,048.07
<b>Total Other Purchased Services</b>				<b>\$1,330,624.00</b>
600 <u>Supplies</u>				
610 General Supplies				254,409.31
620 Energy				4,057.07
630 Food				1,800,932.62
<b>Total Supplies</b>				<b>\$2,059,399.00</b>
700 <u>Property</u>				
740 Depreciation				64,387.00
<b>Total Property</b>				<b>\$64,387.00</b>
800 <u>Other Objects</u>				
890 Miscellaneous Expenditures				76,354.00
<b>Total Other Objects</b>				<b>\$76,354.00</b>
<b>Total 3100 Food Services</b>				<b>\$4,002,623.00</b>



	<u>Food Service(51)</u>	<u>Child Care Operations(52)</u>	<u>Other Enterprise(58)</u>	<u>Internal Service(60)</u>	<u>Total</u>
<b>3000 <u>Operation of Non-Instructional Services</u></b>					
3100 Food Services	4,002,623.00				4,002,623.00
<b>Total Operation of Non-Instructional Services</b>	<b>\$4,002,623.00</b>				<b>\$4,002,623.00</b>
<b>TOTAL ACTUAL EXPENDITURES &amp; OTHER FINANCING USES</b>	<b>\$4,002,623.00</b>				<b>\$4,002,623.00</b>